

Vroegste en laatste datum van gebruik traject grootrond-, langebalk- en kortebalkstempels

Samengesteld door Cees Janssen, Nederlandse Academie voor Filatelie

Bijgewerkt tot en met 22 februari 2023

Hierna volgt een overzicht van alle bekende data van vroegste en laatste gebruik van de grootrondstempels per traject en per letter of cijfer c.q. nummer.

De verkorting Lr/nr: betekent 'letter' of 'nummer'

De verkorting VG: betekent 'vroegst bekende datum van gebruik'

De verkorting LG: betekent 'laatst bekende datum van gebruik'

De verkorting (z) betekent 'zonder letter, cijfer of getal'.

De aanduiding 0-0 in de kolom Lr/nr betekent 'met uur karakters'.

De aanduiding *) betekent: waarschijnlijk stempelafdruk op verzoek

Het teken -- in de kolom 'letter c.q. nummer' betekent, dat géén afdrukken bekend zijn van een grootrondstempel van het betreffende traject.

Tevens zijn opgenomen de grootrondstempels met **nachtuur karakters** aan het einde van de inventarisatie op pagina 23.

Met dank aan de heren Koos van Putten (†), S. de Lange, J.J.M. Arts, Cees van Leeuwen, Maarten van Teeseling, Arie Zonjee, Derk Hoek en nog vele andere verzamelaars voor de verstrekking van hun gegevens betreffende de vroegst bekende en laatst bekende data van gebruik.

Grootrond stempels treintrajecten

| Nr: | Traject: | Lr/nr: | VG: | LG: |
|------------|---------------------|------------------|------------|---------------|
| GRTR 0001A | ALKMAAR-HOORN | I | 1899-05-15 | 1915-03-00 |
| GRTR 0001A | ALKMAAR-HOORN | II | 1902-05-11 | 1910-10-06 *) |
| GRTR 0001B | ALKMAAR-HOORN | A | 1910-03-22 | 1915-06-12 |
| GRTR 0001B | ALKMAAR-HOORN | B | 1904-12-24 | 1912-10-06 *) |
| GRTR 0002A | ALMELOO-APELDOORN | I | 1907-08-14 | 1912-07-12 |
| GRTR 0002A | ALMELOO-APELDOORN | II | 1907-12-26 | 1918-12-30 |
| GRTR 0002A | ALMELOO-APELDOORN | II ^Δ | 19?? | 19?? |
| GRTR 0002A | ALMELOO-APELDOORN | V ^Δ | 1907-06-10 | 19?? |
| GRTR 0002A | ALMELOO-APELDOORN | VII | 1906-05-15 | 1915-12-16 |
| GRTR 0002A | ALMELOO-APELDOORN | VII ^Δ | 1911-02-17 | 19?? |
| GRTR 0002B | ALMELOO-APELDOORN | A | 1910-09-04 | 19?? |
| GRTR 0002B | ALMELOO-APELDOORN | B | 1906-07-15 | 1919-12-04 |
| GRTR 0002B | ALMELOO-APELDOORN | C | 1907-11-06 | 1919-07-31 |
| GRTR 0002B | ALMELOO-APELDOORN | D | 1907-07-04 | 1919-07-11 |
| GRTR 0002B | ALMELOO-APELDOORN | E | 1907-07-20 | 1912-09-30 |
| GRTR 0002B | ALMELOO-APELDOORN | F | 1911-03-20 | 1914-12-23 |
| GRTR 0002B | ALMELOO-APELDOORN | ☛ | 1910-05-24 | 19?? |
| GRTR 0003A | AMST:HARMELEN-ROTT: | I | 1901-06-22 | 1903-10-07 |
| GRTR 0003A | AMST:HARMELEN-ROTT: | II | 1903-07-14 | 1912-12-12 |
| GRTR 0003A | AMST:HARMELEN-ROTT: | V | 1908-10-08 | 19?? |
| GRTR 0003B | AMST:HARMELEN-ROTT: | A | 1898-06-06 | 19?? |
| GRTR 0003B | AMST:HARMELEN-ROTT: | J | 1902-12-23 | 1910-04-20 |
| GRTR 0004 | AMSTERDAM E | E | 1896-02-00 | 1899-03-13 |
| GRTR 0005A | AMSTERDAM-ANTWERPEN | I | 1900-09-22 | 1911-12-23 |
| GRTR 0005A | AMSTERDAM-ANTWERPEN | II | 1897-09-27 | 1914-04-27 |
| GRTR 0005A | AMSTERDAM-ANTWERPEN | III | 1907-04-24 | 1918-01-11 |
| GRTR 0005A | AMSTERDAM-ANTWERPEN | IV | 1912-01-01 | 1912-12-16 |
| GRTR 0005A | AMSTERDAM-ANTWERPEN | IV ^Δ | 1900-07-09 | 1903-09-20 |
| GRTR 0005A | AMSTERDAM-ANTWERPEN | V | 1907-09-26 | 1913-03-08 |
| GRTR 0005A | AMSTERDAM-ANTWERPEN | VI | 1898-12-23 | 1911-08-06 |

| | | | | |
|------------|---------------------|-------------------|------------|------------|
| GRTR 0005A | AMSTERDAM-ANTWERPEN | VII | 1906-01-31 | 1910-09-20 |
| GRTR 0005A | AMSTERDAM-ANTWERPEN | VIII | 1897-02-15 | 1912-05-26 |
| GRTR 0005A | AMSTERDAM-ANTWERPEN | IX | 1898-01-14 | 1911-08-28 |
| GRTR 0005A | AMSTERDAM-ANTWERPEN | IX ^A | 1910-12-24 | 19?? |
| GRTR 0005A | AMSTERDAM-ANTWERPEN | X | 1898-05-14 | 1913-06-13 |
| GRTR 0005A | AMSTERDAM-ANTWERPEN | XI | 1902-12-18 | 1910-08-01 |
| GRTR 0005A | AMSTERDAM-ANTWERPEN | XII | 1899-01-27 | 1911-07-08 |
| GRTR 0005A | AMSTERDAM-ANTWERPEN | XIII | 1906-12-22 | 19?? |
| GRTR 0005B | AMSTERDAM-ANTWERPEN | A | 1899-08-22 | 1904-09-24 |
| GRTR 0005B | AMSTERDAM-ANTWERPEN | A ^l | 1905-04-10 | 1905-05-25 |
| GRTR 0005B | AMSTERDAM-ANTWERPEN | B | 1896-11-03 | 1909-09-27 |
| GRTR 0005B | AMSTERDAM-ANTWERPEN | C | 1903-02-28 | 1912-06-12 |
| GRTR 0005B | AMSTERDAM-ANTWERPEN | C ^l | 1908-04-06 | 1914-08-07 |
| GRTR 0005B | AMSTERDAM-ANTWERPEN | D | 1897-09-17 | 1909-03-04 |
| GRTR 0005B | AMSTERDAM-ANTWERPEN | E | 1898-03-01 | 1911-07-12 |
| GRTR 0005B | AMSTERDAM-ANTWERPEN | E ^l | 1912-05-06 | 19?? |
| GRTR 0005B | AMSTERDAM-ANTWERPEN | F | 1902-07-09 | 1911-06-03 |
| GRTR 0005B | AMSTERDAM-ANTWERPEN | F ^l | 1905-06-07 | 19?? |
| GRTR 0005B | AMSTERDAM-ANTWERPEN | G | 1899-12-16 | 1909-09-03 |
| GRTR 0005B | AMSTERDAM-ANTWERPEN | G ^l | 1903-12-12 | 19?? |
| GRTR 0005B | AMSTERDAM-ANTWERPEN | H | 1906-07-21 | 1913-02-05 |
| GRTR 0005B | AMSTERDAM-ANTWERPEN | J | 1900-02-24 | 1910-10-10 |
| GRTR 0005B | AMSTERDAM-ANTWERPEN | J ^l | 1907-05-06 | 1911-03-07 |
| GRTR 0005B | AMSTERDAM-ANTWERPEN | K | 1911-03-04 | 19?? |
| GRTR 0005B | AMSTERDAM-ANTWERPEN | K ^l | 1899-09-29 | 1912-12-18 |
| GRTR 0005B | AMSTERDAM-ANTWERPEN | L | 1910-08-02 | 19?? |
| GRTR 0005B | AMSTERDAM-ANTWERPEN | M | 1906-08-10 | 1908-06-08 |
| GRTR 0005B | AMSTERDAM-ANTWERPEN | ☛ | 1899-08-11 | 1900-09-25 |
| GRTR 0006A | AMSTERDAM-BREDA | VI | 1896-12-31 | 1903-10-12 |
| GRTR 0006A | AMSTERDAM-BREDA | VIII ^A | 19?? | 19?? |
| GRTR 0006A | AMSTERDAM-BREDA | X | 1915-12-20 | 19?? |
| GRTR 0006B | AMSTERDAM-BREDA | F | 1904-07-05 | 19?? |
| GRTR 0006B | AMSTERDAM-BREDA | G ^l | 19?? | 19?? |
| GRTR 0007A | AMSTERDAM-EMMERIK | I | 1907-01-16 | 1914-06-02 |
| GRTR 0007A | AMSTERDAM-EMMERIK | II | 1910-09-13 | 1912-03-05 |
| GRTR 0007A | AMSTERDAM-EMMERIK | III | 1899-08-04 | 1915-04-18 |
| GRTR 0007A | AMSTERDAM-EMMERIK | IV | 19?? | 19?? |
| GRTR 0007A | AMSTERDAM-EMMERIK | V | 1904-10-08 | 1911-06-23 |
| GRTR 0007A | AMSTERDAM-EMMERIK | VI | 1896-06-27 | 1897-01-17 |
| GRTR 0007A | AMSTERDAM-EMMERIK | VII | 1899-11-14 | 1913-06-22 |
| GRTR 0007A | AMSTERDAM-EMMERIK | VII ^A | 1910-07-23 | 1911-08-09 |
| GRTR 0007A | AMSTERDAM-EMMERIK | VIII | 1898-01-12 | 1913-06-22 |
| GRTR 0007A | AMSTERDAM-EMMERIK | VIII ^A | 1910-07-12 | 19?? |
| GRTR 0007A | AMSTERDAM-EMMERIK | IX | 1902-04-10 | 1914-05-15 |
| GRTR 0007A | AMSTERDAM-EMMERIK | X | 1904-07-11 | 1911-02-09 |
| GRTR 0007A | AMSTERDAM-EMMERIK | X ^A | 1913-03-04 | 19?? |
| GRTR 0007A | AMSTERDAM-EMMERIK | XI | 1895-01-11 | 1912-07-00 |
| GRTR 0007A | AMSTERDAM-EMMERIK | XII | 1902-07-10 | 1912-08-12 |
| GRTR 0007A | AMSTERDAM-EMMERIK | XIII | 1900-10-10 | 1902-10-11 |
| GRTR 0007B | AMSTERDAM-EMMERIK | A | 1902-07-25 | 1909-11-17 |
| GRTR 0007B | AMSTERDAM-EMMERIK | A ^l | 19?? | 19?? |
| GRTR 0007B | AMSTERDAM-EMMERIK | B | 1907-01-25 | 1913-03-28 |
| GRTR 0007B | AMSTERDAM-EMMERIK | C | 1905-02-14 | 1911-10-09 |
| GRTR 0007B | AMSTERDAM-EMMERIK | C ^l | 19?? | 19?? |
| GRTR 0007B | AMSTERDAM-EMMERIK | D | 1897-11-11 | 1911-04-08 |
| GRTR 0007B | AMSTERDAM-EMMERIK | E | 1907-05-23 | 1915-07-30 |

| | | | | |
|------------|---------------------|-----------------|----------------|------------|
| GRTR 0007B | AMSTERDAM-EMMERIK | E ^I | 1912-06-27 | 19?? |
| GRTR 0007B | AMSTERDAM-EMMERIK | F | 1902-08-26 | 1914-01-28 |
| GRTR 0007B | AMSTERDAM-EMMERIK | F ^I | 19?? | 19?? |
| GRTR 0007B | AMSTERDAM-EMMERIK | G | 1900-11-03 | 1906-08-18 |
| GRTR 0007B | AMSTERDAM-EMMERIK | K | 1897-01-28 | 1911-08-28 |
| GRTR 0007B | AMSTERDAM-EMMERIK | L | 1917-05-02 | 19?? |
| GRTR 0007B | AMSTERDAM-EMMERIK | L ^I | 19?? | 19?? |
| GRTR 0007B | AMSTERDAM-EMMERIK | ☹ | 1900-01-02 | 19?? |
| GRTR 0008A | AMSTERDAM-ENKHUIZEN | I | 1905-03-25 | 1911-03-06 |
| GRTR 0008A | AMSTERDAM-ENKHUIZEN | II | 1908-02-17 | 1911-03-24 |
| GRTR 0008A | AMSTERDAM-ENKHUIZEN | III | 1910-04-26 | 1915-04-18 |
| GRTR 0008A | AMSTERDAM-ENKHUIZEN | IV | 1903-07-31 | 19?? |
| GRTR 0008A | AMSTERDAM-ENKHUIZEN | V | zonder jaartal | 19?? |
| GRTR 0008A | AMSTERDAM-ENKHUIZEN | VI | 1900-08-13 | 19?? |
| GRTR 0008B | AMSTERDAM-ENKHUIZEN | A | 1900-07-11 | 1913-03-05 |
| GRTR 0008B | AMSTERDAM-ENKHUIZEN | B | 1910-04-26 | 19?? |
| GRTR 0008B | AMSTERDAM-ENKHUIZEN | B ^I | 1903-05-12 | 19?? |
| GRTR 0008B | AMSTERDAM-ENKHUIZEN | C | 1901-10-11 | 1903-11-27 |
| GRTR 0008B | AMSTERDAM-ENKHUIZEN | D | 1906-03-17 | 1913-08-21 |
| GRTR 0008B | AMSTERDAM-ENKHUIZEN | E | 1903-09-30 | 1912-07-17 |
| GRTR 0008B | AMSTERDAM-ENKHUIZEN | F | 1899-09-22 | 1912-12-28 |
| GRTR 0009A | AMSTERDAM-HELDER | I | 1906-10-22 | 1909-10-11 |
| GRTR 0009A | AMSTERDAM-HELDER | II | 1909-10-26 | 19?? |
| GRTR 0009A | AMSTERDAM-HELDER | II ^A | 1900-12-12 | 19?? |
| GRTR 0009A | AMSTERDAM-HELDER | III | 1907-02-13 | 1914-09-17 |
| GRTR 0009A | AMSTERDAM-HELDER | IV | 1902-02-07 | 1908-09-04 |
| GRTR 0009A | AMSTERDAM-HELDER | V | 1905-04-22 | 1907-11-04 |
| GRTR 0009A | AMSTERDAM-HELDER | VI | 1913-03-11 | 1915-11-29 |
| GRTR 0009B | AMSTERDAM-HELDER | A | 1903-06-10 | 1910-06-15 |
| GRTR 0009B | AMSTERDAM-HELDER | A ^I | 1912-02-18 | 1915-04-11 |
| GRTR 0009B | AMSTERDAM-HELDER | B | 1901-08-30 | 1917-07-30 |
| GRTR 0009B | AMSTERDAM-HELDER | C | 1907-07-25 | 1913-05-12 |
| GRTR 0009B | AMSTERDAM-HELDER | D | 1900-10-30 | 1916-01-06 |
| GRTR 0009B | AMSTERDAM-HELDER | E | 1904-08-24 | 1913-11-17 |
| GRTR 0009B | AMSTERDAM-HELDER | F | 1905-09-02 | 1909-09-24 |
| GRTR 0010A | AMSTERDAM-NIJMEGEN | I | 1907-08-21 | 19?? |
| GRTR 0010A | AMSTERDAM-NIJMEGEN | II | 1899-01-24 | 1912-08-02 |
| GRTR 0010A | AMSTERDAM-NIJMEGEN | III | 1899-09-12 | 1910-08-03 |
| GRTR 0010A | AMSTERDAM-NIJMEGEN | IV | 1906-10-17 | 1908-08-15 |
| GRTR 0010A | AMSTERDAM-NIJMEGEN | V | 1910-05-25 | 1911-09-18 |
| GRTR 0010B | AMSTERDAM-NIJMEGEN | A | 1899-05-09 | 1912-07-02 |
| GRTR 0010B | AMSTERDAM-NIJMEGEN | A ^I | 1899-08-22 | 1903-08-15 |
| GRTR 0010B | AMSTERDAM-NIJMEGEN | B | 1904-08-20 | 1911-07-20 |
| GRTR 0010B | AMSTERDAM-NIJMEGEN | C | 1900-08-16 | 1908-10-12 |
| GRTR 0011A | AMSTERDAM-RHEINE | IV | 19?? | 19?? |
| GRTR 0011A | AMSTERDAM-RHEINE | VI | 19?? | 19?? |
| GRTR 0011A | AMSTERDAM-RHEINE | VII | 1909-02-17 *) | 1910-04-10 |
| GRTR 0011A | AMSTERDAM-RHEINE | VIII | 1911-12-21 | 19?? |
| GRTR 0011B | AMSTERDAM-RHEINE | B | 1910-04-17 | 19?? |
| GRTR 0012A | AMSTERDAM-UITGEEST | I | 1901-05-03 | 1910-06-28 |
| GRTR 0012A | AMSTERDAM-UITGEEST | II | 1904-06-21 | 1912-08-05 |
| GRTR 0012A | AMSTERDAM-UITGEEST | III | 1905-11-15 | 19?? |
| GRTR 0012A | AMSTERDAM-UITGEEST | IV | 1910-03-24 | 1911-11-09 |
| GRTR 0012A | AMSTERDAM-UITGEEST | V | 1906-08-01 | 1909-06-01 |
| GRTR 0012A | AMSTERDAM-UITGEEST | VI | 1900-10-22 | 1902-08-25 |

| | | | | |
|------------|----------------------|------------------|---------------|------------|
| GRTR 0012B | AMSTERDAM-UITGEEST | A | 1907-04-05 | 1912-12-15 |
| GRTR 0012B | AMSTERDAM-UITGEEST | B | 1901-09-03 | 1911-06-29 |
| GRTR 0012B | AMSTERDAM-UITGEEST | C | 1909-02-10 | 1915-03-13 |
| GRTR 0012B | AMSTERDAM-UITGEEST | D | 1900-08-25 | 1914-07-06 |
| GRTR 0012B | AMSTERDAM-UITGEEST | E | 1899-06-23 | 1908-10-22 |
| GRTR 0013A | AMSTERDAM-VLISSINGEN | I | 1909-05-03 | 1911-04-07 |
| GRTR 0013A | AMSTERDAM-VLISSINGEN | I ^A | 19?? | 19?? |
| GRTR 0013A | AMSTERDAM-VLISSINGEN | V | 19?? | 19?? |
| GRTR 0013A | AMSTERDAM-VLISSINGEN | VII | 1909-10-10 | 1912-03-04 |
| GRTR 0013B | AMSTERDAM-VLISSINGEN | A | 19?? | 19?? |
| GRTR 0013B | AMSTERDAM-VLISSINGEN | B | 1905-11-13 | 1910-12-30 |
| GRTR 0013B | AMSTERDAM-VLISSINGEN | G | 1904-12-13 | 1908-06-18 |
| GRTR 0013B | AMSTERDAM-VLISSINGEN | J | 1910-08-21 | 19?? |
| GRTR 0013B | AMSTERDAM-VLISSINGEN | ☛ | 19?? | 19?? |
| GRTR 0014A | AMSTERDAM-ZUTPHEN | I | 1901-03-14 | 1912-06-23 |
| GRTR 0014A | AMSTERDAM-ZUTPHEN | II | 1901-02-22 | 1912-05-30 |
| GRTR 0014A | AMSTERDAM-ZUTPHEN | II ^A | 1905-09-25 | 19?? |
| GRTR 0014A | AMSTERDAM-ZUTPHEN | III | 1899-09-12 | 1906-03-12 |
| GRTR 0014A | AMSTERDAM-ZUTPHEN | IV | 1900-10-26 | 1911-09-27 |
| GRTR 0014A | AMSTERDAM-ZUTPHEN | IV ^A | 1900-09-03 | 19?? |
| GRTR 0014A | AMSTERDAM-ZUTPHEN | V | 1898-10-28 | 1909-11-13 |
| GRTR 0014A | AMSTERDAM-ZUTPHEN | V ^A | 1907-02-09 | 19?? |
| GRTR 0014A | AMSTERDAM-ZUTPHEN | VI | 1899-12-18 | 1909-03-08 |
| GRTR 0014A | AMSTERDAM-ZUTPHEN | VII | 1907-07-09 | 19?? |
| GRTR 0014A | AMSTERDAM-ZUTPHEN | VIII | 1907-07-19 | 19?? |
| GRTR 0014A | AMSTERDAM-ZUTPHEN | IX | 1911-11-24 | 19?? |
| GRTR 0014B | AMSTERDAM-ZUTPHEN | A | 1906-08-01 | 1906-08-10 |
| GRTR 0014B | AMSTERDAM-ZUTPHEN | A ^I | 1906-09-11 | 19?? |
| GRTR 0014B | AMSTERDAM-ZUTPHEN | B | 1904-12-19 | 1912-03-11 |
| GRTR 0014B | AMSTERDAM-ZUTPHEN | C | 1908-08-06 | 1912-08-08 |
| GRTR 0014B | AMSTERDAM-ZUTPHEN | D | 1898-05-25 | 1910-08-10 |
| GRTR 0014B | AMSTERDAM-ZUTPHEN | E | 1902-08-14 | 1912-10-21 |
| GRTR 0014B | AMSTERDAM-ZUTPHEN | F | 1906-08-26 | 1910-08-03 |
| GRTR 0014B | AMSTERDAM-ZUTPHEN | G | 1899-05-25 | 1911-06-08 |
| GRTR 0014B | AMSTERDAM-ZUTPHEN | H | 1906-07-17 | 19?? |
| GRTR 0014B | AMSTERDAM-ZUTPHEN | ☛ | 19?? | 19?? |
| GRTR 0015A | APELDOORN-ALMELO | I | 1909-05-29 | 19?? |
| GRTR 0015A | APELDOORN-ALMELO | II | 1909-06-17 | 19?? |
| GRTR 0015A | APELDOORN-ALMELO | VII ^A | 19?? | 19?? |
| GRTR 0015B | APELDOORN-ALMELO | B | 19?? | 19?? |
| GRTR 0015B | APELDOORN-ALMELO | D | 1909-07-31 | 19?? |
| GRTR 0015B | APELDOORN-ALMELO | E | 1909-05-07 | 1909-07-10 |
| GRTR 0015B | APELDOORN-ALMELO | ☛ | 19?? | 19?? |
| GRTR 0016A | APELDOORN-RHEINE | VIII | 1908-08-13 | 1914-07-00 |
| GRTR 0016B | APELDOORN-RHEINE | B | 1908-08-11 | 19?? |
| GRTR 0017A | ARNHEM-BOXTEL | I | 1910-05-11 | 19?? |
| GRTR 0017B | ARNHEM-BOXTEL | E | 19?? | 19?? |
| GRTR 0017B | ARNHEM-BOXTEL | L | 19?? | 19?? |
| GRTR 0018A | ARNHEM-BREDA | I | 1906-01-06 | 1915-05-20 |
| GRTR 0018A | ARNHEM-BREDA | II | 1900-03-13 | 1908-09-21 |
| GRTR 0018A | ARNHEM-BREDA | III | 1898-12-20 | 1914-10-04 |
| GRTR 0018A | ARNHEM-BREDA | IV | 1899-03-14 *) | 1911-07-01 |
| GRTR 0018A | ARNHEM-BREDA | V | 1899-02-20 | 1910-08-03 |
| GRTR 0018A | ARNHEM-BREDA | VI | 1896-02-24 | 1910-10-30 |

| | | | | |
|------------|------------------|--------------------|---------------|------------|
| GRTR 0018A | ARNHEM-BREDA | VI ^A | 19?? | 19?? |
| GRTR 0018A | ARNHEM-BREDA | VI ^B | 19?? | 19?? |
| GRTR 0018A | ARNHEM-BREDA | VII | 1912-09-20 | 19?? |
| GRTR 0018A | ARNHEM-BREDA | VII ^{BIS} | 19?? | 19?? |
| GRTR 0018A | ARNHEM-BREDA | VIII | 19?? | 19?? |
| GRTR 0018A | ARNHEM-BREDA | IX | 1908-09-30 | 19?? |
| GRTR 0018A | ARNHEM-BREDA | X | 1909-08-11 | 1910-07-28 |
| GRTR 0018A | ARNHEM-BREDA | XI | 19?? | 19?? |
| GRTR 0018A | ARNHEM-BREDA | XII | 19?? | 19?? |
| GRTR 0018B | ARNHEM-BREDA | A | 1902-07-18 | 1914-09-03 |
| GRTR 0018B | ARNHEM-BREDA | B | 1910-08-10 | 19?? |
| GRTR 0018B | ARNHEM-BREDA | C | 1908-01-27 | 1910-03-29 |
| GRTR 0018B | ARNHEM-BREDA | D | 1912-10-30 | 1916-03-02 |
| GRTR 0018B | ARNHEM-BREDA | E | 1902-08-29 | 1908-08-09 |
| GRTR 0018B | ARNHEM-BREDA | F | 1914-02-18 | 1914-06-15 |
| GRTR 0018B | ARNHEM-BREDA | F ^I | 19?? | 19?? |
| GRTR 0018B | ARNHEM-BREDA | G | 1910-06-01 | 1915-01-04 |
| GRTR 0018B | ARNHEM-BREDA | H | 1904-02-20 | 19?? |
| GRTR 0018B | ARNHEM-BREDA | J | 1909-02-07 | 19?? |
| GRTR 0018B | ARNHEM-BREDA | K | 1909-09-29 | 19?? |
| GRTR 0018B | ARNHEM-BREDA | L | 19?? | 19?? |
| GRTR 0019A | ARNHEM-OLDENZAAL | I | 1900-03-23 | 1915-11-24 |
| GRTR 0019A | ARNHEM-OLDENZAAL | II | 1908-07-24 | 1917-04-02 |
| GRTR 0019A | ARNHEM-OLDENZAAL | III | 1901-06-28 | 1909-05-25 |
| GRTR 0019A | ARNHEM-OLDENZAAL | IV | 1904-02-27 | 1915-08-28 |
| GRTR 0019A | ARNHEM-OLDENZAAL | V | 1901-04-24 | 1911-10-02 |
| GRTR 0019A | ARNHEM-OLDENZAAL | VI | 1901-02-14 | 1907-03-22 |
| GRTR 0019A | ARNHEM-OLDENZAAL | VII | 1899-01-17 | 1909-09-03 |
| GRTR 0019A | ARNHEM-OLDENZAAL | VIII | 1900-11-29 | 1909-10-05 |
| GRTR 0019A | ARNHEM-OLDENZAAL | VIII ^A | 1907-06-14 | 1912-05-10 |
| GRTR 0019A | ARNHEM-OLDENZAAL | VIII ^B | 19?? | 19?? |
| GRTR 0019A | ARNHEM-OLDENZAAL | IX | 1905-08-03 | 19?? |
| GRTR 0019A | ARNHEM-OLDENZAAL | X | 1910-08-27 | 19?? |
| GRTR 0019A | ARNHEM-OLDENZAAL | XI | 19?? | 19?? |
| GRTR 0019B | ARNHEM-OLDENZAAL | A | 1901-06-14 | 1917-02-04 |
| GRTR 0019B | ARNHEM-OLDENZAAL | A ^I | 1911-08-17 | 19?? |
| GRTR 0019B | ARNHEM-OLDENZAAL | B | 1899-07-17 | 1907-06-03 |
| GRTR 0019B | ARNHEM-OLDENZAAL | B ^I | 1902-07-30 | 1905-08-31 |
| GRTR 0019B | ARNHEM-OLDENZAAL | C | 1898-08-25 | 1918-07-09 |
| GRTR 0019B | ARNHEM-OLDENZAAL | D | 1895-09-27 | 1919-06-17 |
| GRTR 0019B | ARNHEM-OLDENZAAL | D ^I | 19?? | 19?? |
| GRTR 0019B | ARNHEM-OLDENZAAL | E | 1899-04-12 | 1911-04-18 |
| GRTR 0019B | ARNHEM-OLDENZAAL | E ^I | 1903-07-30 | 1903-11-21 |
| GRTR 0019B | ARNHEM-OLDENZAAL | F | 1907-03-25 | 1912-10-26 |
| GRTR 0019B | ARNHEM-OLDENZAAL | G | 1902-06-09 | 1913-12-30 |
| GRTR 0019B | ARNHEM-OLDENZAAL | H | 1907-05-12 | 19?? |
| GRTR 0019B | ARNHEM-OLDENZAAL | J | 19?? | 19?? |
| GRTR 0019B | ARNHEM-OLDENZAAL | K | 1910-09-20 | 1911-09-02 |
| GRTR 0019B | ARNHEM-OLDENZAAL | L | 1909-10-01 | 1911-08-09 |
| GRTR 0019B | ARNHEM-OLDENZAAL | M | 1902-10-16 | 19?? |
| GRTR 0020A | ARNHEM-ROOSEDAAL | II | 19?? | 19?? |
| GRTR 0020A | ARNHEM-ROOSEDAAL | V | 1910-03-15 *) | 19?? |
| GRTR 0020A | ARNHEM-ROOSEDAAL | VI | 1910-03-15 *) | 19?? |
| GRTR 0020A | ARNHEM-ROOSEDAAL | IX | 19?? | 19?? |
| GRTR 0020A | ARNHEM-ROOSEDAAL | XI | 1907-10-03 | 19?? |
| GRTR 0020A | ARNHEM-ROOSEDAAL | XII | 1911-04-05 | 1912-08-14 |

| | | | | |
|------------|-----------------------|----------------|------------|------------|
| GRTR 0020B | ARNHEM-ROOSENDAAL | E | 1904-07-12 | 1910-03-15 |
| GRTR 0020B | ARNHEM-ROOSENDAAL | G | 1908-06-09 | 1909-07-20 |
| GRTR 0021A | ARNHEM-ROTTERDAM | I | 1910-05-26 | 1912-05-06 |
| GRTR 0021A | ARNHEM-ROTTERDAM | II | 1901-02-26 | 1910-12-08 |
| GRTR 0021A | ARNHEM-ROTTERDAM | III | 1900-06-09 | 1912-04-17 |
| GRTR 0021A | ARNHEM-ROTTERDAM | IV | 1901-09-23 | 1910-09-08 |
| GRTR 0021A | ARNHEM-ROTTERDAM | V | 1908-03-11 | 1912-09-19 |
| GRTR 0021B | ARNHEM-ROTTERDAM | A | 1902-11-17 | 1911-03-15 |
| GRTR 0021B | ARNHEM-ROTTERDAM | B | 1899-09-07 | 1907-12-20 |
| GRTR 0021B | ARNHEM-ROTTERDAM | C | 1901-01-23 | 1910-07-25 |
| GRTR 0021B | ARNHEM-ROTTERDAM | C ¹ | 1914-11-21 | 19?? |
| GRTR 0021B | ARNHEM-ROTTERDAM | D | 1902-08-05 | 1914-06-30 |
| GRTR 0021B | ARNHEM-ROTTERDAM | E | 1907-09-10 | 1910-06-23 |
| GRTR 0022A | BOKSTEL-GOCH | I | 1909-06-15 | 19?? |
| GRTR 0022A | BOKSTEL-GOCH | II | 1901-04-23 | 19?? |
| GRTR 0022A | BOKSTEL-GOCH | III | 1907-09-23 | 1907-07-31 |
| GRTR 0022B | BOKSTEL-GOCH | A | 1903-11-23 | 1908-12-02 |
| GRTR 0022B | BOKSTEL-GOCH | B | 1900-04-03 | 1912-04-04 |
| GRTR 0022B | BOKSTEL-GOCH | C | 1900-01-19 | 1909-11-08 |
| GRTR 0023A | BREDA-ARNHEM | I | 1899-10-12 | 1911-09-22 |
| GRTR 0023A | BREDA-ARNHEM | II | 1896-06-12 | 1909-09-20 |
| GRTR 0023A | BREDA-ARNHEM | III | 1897-08-12 | 1899-02-07 |
| GRTR 0023A | BREDA-ARNHEM | IV | 1900-11-13 | 19?? |
| GRTR 0023A | BREDA-ARNHEM | VI | 1908-03-26 | 19?? |
| GRTR 0023A | BREDA-ARNHEM | VII | 1905-12-14 | 19?? |
| GRTR 0023A | BREDA-ARNHEM | VIII | 19?? | 19?? |
| GRTR 0023B | BREDA-ARNHEM | A | 1899-12-23 | 1914-10-11 |
| GRTR 0023B | BREDA-ARNHEM | B | 19?? | 19?? |
| GRTR 0023B | BREDA-ARNHEM | D | 1895-11-27 | 1899-06-30 |
| GRTR 0023B | BREDA-ARNHEM | E | 1902-07-16 | 19?? |
| GRTR 0023B | BREDA-ARNHEM | F ¹ | 1899-01-04 | 1913-04-19 |
| GRTR 0023B | BREDA-ARNHEM | H | 1898-08-16 | 1900-10-05 |
| GRTR 0023B | BREDA-ARNHEM | J | 19?? | 19?? |
| GRTR 0024A | BREDA-VLISSINGEN | I | 1899-09-23 | 1907-03-11 |
| GRTR 0024A | BREDA-VLISSINGEN | II | 1906-04-05 | 1909-12-20 |
| GRTR 0024A | BREDA-VLISSINGEN | IIA | 1906-07-09 | 1907-10-09 |
| GRTR 0024A | BREDA-VLISSINGEN | III | 1902-07-28 | 1910-06-11 |
| GRTR 0024A | BREDA-VLISSINGEN | IV | 1898-11-29 | 1909-01-04 |
| GRTR 0024A | BREDA-VLISSINGEN | V | 1898-11-18 | 1909-04-07 |
| GRTR 0024A | BREDA-VLISSINGEN | VI | 1909-07-17 | 1911-12-11 |
| GRTR 0024A | BREDA-VLISSINGEN | VII | 1912-03-06 | 19?? |
| GRTR 0024A | BREDA-VLISSINGEN | VIII | 1908-10-07 | 1911-09-29 |
| GRTR 0024B | BREDA-VLISSINGEN | A | 1901-09-08 | 1910-04-20 |
| GRTR 0024B | BREDA-VLISSINGEN | B | 1906-10-09 | 1910-07-17 |
| GRTR 0024B | BREDA-VLISSINGEN | B ¹ | 1901-01-31 | 19?? |
| GRTR 0024B | BREDA-VLISSINGEN | C | 1908-11-03 | 19?? |
| GRTR 0024B | BREDA-VLISSINGEN | D | 1906-10-24 | 1922-02-10 |
| GRTR 0024B | BREDA-VLISSINGEN | E | 1904-11-11 | 1911-02-17 |
| GRTR 0024B | BREDA-VLISSINGEN | F | 1903-09-13 | 1908-07-27 |
| GRTR 0024B | BREDA-VLISSINGEN | G | 19?? | 19?? |
| GRTR 0024B | BREDA-VLISSINGEN | H | 1911-02-17 | 19?? |
| GRTR 0025A | COEVORDEN-STADSKANAAL | I | 1908-09-29 | 1912-08-17 |
| GRTR 0025A | COEVORDEN-STADSKANAAL | II | 1908-11-12 | 1910-02-15 |
| GRTR 0025A | COEVORDEN-STADSKANAAL | III | 1908-03-09 | 1920-08-20 |
| GRTR 0025A | COEVORDEN-STADSKANAAL | IV | 1906-11-27 | 1912-04-26 |

| | | | | |
|------------|-----------------------|-------------------|------------|------------|
| GRTR 0025B | COEVORDEN-STADSKANAAL | A | 1909-04-14 | 1910-11-08 |
| GRTR 0025B | COEVORDEN-STADSKANAAL | B | 1906-07-23 | 1906-09-14 |
| GRTR 0025B | COEVORDEN-STADSKANAAL | C | 1907-08-28 | 1907-10-09 |
| GRTR 0025B | COEVORDEN-STADSKANAAL | D | 1907-09-18 | 1911-12-02 |
| GRTR 0026A | DIEREN-ZWOLLE | I | 1903-05-11 | 1911-05-22 |
| GRTR 0026A | DIEREN-ZWOLLE | II | 1905-08-06 | 1912-11-29 |
| GRTR 0026A | DIEREN-ZWOLLE | III | 1902-07-03 | 1904-09-03 |
| GRTR 0026A | DIEREN-ZWOLLE | IV | 1906-08-10 | 1914-07-25 |
| GRTR 0026A | DIEREN-ZWOLLE | VI | 1905-12-06 | 19?? |
| GRTR 0026B | DIEREN-ZWOLLE | A | 1904-10-04 | 19?? |
| GRTR 0026B | DIEREN-ZWOLLE | B | 1903-07-14 | 1912-06-17 |
| GRTR 0026B | DIEREN-ZWOLLE | B ¹ | 1902-04-29 | 1905-08-16 |
| GRTR 0026B | DIEREN-ZWOLLE | C | 1906-08-25 | 1913-05-03 |
| GRTR 0026B | DIEREN-ZWOLLE | D | 1905-11-26 | 1911-10-05 |
| GRTR 0026B | DIEREN-ZWOLLE | E | 1908-04-22 | 1911-10-05 |
| GRTR 0027A | 'sGRAVENHAGE-GOUDA | I | 1904-09-15 | 1914-10-21 |
| GRTR 0027A | 'sGRAVENHAGE-GOUDA | II | 1901-02-06 | 1911-04-03 |
| GRTR 0027A | 'sGRAVENHAGE-GOUDA | III | 1901-12-31 | 1905-07-25 |
| GRTR 0027A | 'sGRAVENHAGE-GOUDA | IV | 1904-10-08 | 1908-08-21 |
| GRTR 0027A | 'sGRAVENHAGE-GOUDA | V | 1902-04-10 | 1914-07-13 |
| GRTR 0027A | 'sGRAVENHAGE-GOUDA | VI | 1899-07-24 | 1913-09-25 |
| GRTR 0027A | 'sGRAVENHAGE-GOUDA | VII | 1901-07-01 | 1915-09-20 |
| GRTR 0027A | 'sGRAVENHAGE-GOUDA | VII ^A | 19?? | 19?? |
| GRTR 0027A | 'sGRAVENHAGE-GOUDA | VIII | 1905-08-14 | 19?? |
| GRTR 0027A | 'sGRAVENHAGE-GOUDA | IX | 1908-08-09 | 1916-05-07 |
| GRTR 0027B | 'sGRAVENHAGE-GOUDA | A | 1916-03-10 | 19?? |
| GRTR 0027B | 'sGRAVENHAGE-GOUDA | B | 1901-09-03 | 19?? |
| GRTR 0027B | 'sGRAVENHAGE-GOUDA | C | 1901-08-15 | 19?? |
| GRTR 0027B | 'sGRAVENHAGE-GOUDA | D | 19?? | 19?? |
| GRTR 0027B | 'sGRAVENHAGE-GOUDA | E | 1909-03-12 | 1910-08-03 |
| GRTR 0027B | 'sGRAVENHAGE-GOUDA | F | 1904-12-02 | 19?? |
| GRTR 0027B | 'sGRAVENHAGE-GOUDA | G | 19?? | 19?? |
| GRTR 0027B | 'sGRAVENHAGE-GOUDA | H | 19?? | 19?? |
| GRTR 0027B | 'sGRAVENHAGE-GOUDA | ☛ | 19?? | 19?? |
| GRTR 0028A | GRONINGEN-DELFIJL | I | 1904-05-13 | 1907-12-14 |
| GRTR 0028A | GRONINGEN-DELFIJL | II | 1901-06-26 | 1908-05-20 |
| GRTR 0028A | GRONINGEN-DELFIJL | III | 1903-06-29 | 1908-05-21 |
| GRTR 0028A | GRONINGEN-DELFIJL | IV | 1903-12-26 | 1917-11-03 |
| GRTR 0028B | GRONINGEN-DELFIJL | A | 1902-08-25 | 19?? |
| GRTR 0028B | GRONINGEN-DELFIJL | B | 1910-06-20 | 19?? |
| GRTR 0028B | GRONINGEN-DELFIJL | C | 19?? | 19?? |
| GRTR 0028B | GRONINGEN-DELFIJL | D | 1906-06-05 | 19?? |
| GRTR 0029A | GRONINGEN-ROODESCHOOL | I | 1907-10-15 | 1917-06-11 |
| GRTR 0029A | GRONINGEN-ROODESCHOOL | II | 1905-06-13 | 1917-06-21 |
| GRTR 0029A | GRONINGEN-ROODESCHOOL | III | 1903-01-22 | 1919-07-03 |
| GRTR 0029A | GRONINGEN-ROODESCHOOL | IV | 1908-08-21 | 1912-04-18 |
| GRTR 0029B | GRONINGEN-ROODESCHOOL | A | 1912-06-18 | 19?? |
| GRTR 0029B | GRONINGEN-ROODESCHOOL | B | 1909-05-15 | 1911-10-10 |
| GRTR 0029B | GRONINGEN-ROODESCHOOL | C | 1905-11-30 | 1912-04-05 |
| GRTR 0029B | GRONINGEN-ROODESCHOOL | D | 1911-10-10 | 1917-06-22 |
| GRTR 0030A | GRONINGEN-ZWOLLE | I | 1903-02-03 | 1903-11-16 |
| GRTR 0030A | GRONINGEN-ZWOLLE | II | 1897-09-06 | 1908-04-14 |
| GRTR 0030A | GRONINGEN-ZWOLLE | III | 1906-05-02 | 19?? |
| GRTR 0030A | GRONINGEN-ZWOLLE | IV | 1905-06-05 | 1911-10-16 |
| GRTR 0030A | GRONINGEN-ZWOLLE | IV ^{BIS} | 19?? | 19?? |

| | | | | |
|------------|------------------------|-----------------|------------|------------|
| GRTR 0030A | GRONINGEN-ZWOLLE | V | 1904-04-06 | 1914-09-27 |
| GRTR 0030A | GRONINGEN-ZWOLLE | VI | 1909-03-04 | 1916-08-17 |
| GRTR 0030A | GRONINGEN-ZWOLLE | VII | 1901-03-04 | 1912-10-12 |
| GRTR 0030A | GRONINGEN-ZWOLLE | VIII | 1909-02-23 | 19?? |
| GRTR 0030B | GRONINGEN-ZWOLLE | A | 1907-06-11 | 1912-12-25 |
| GRTR 0030B | GRONINGEN-ZWOLLE | B | 1905-06-28 | 19?? |
| GRTR 0030B | GRONINGEN-ZWOLLE | C | 1901-04-15 | 1906-12-23 |
| GRTR 0030B | GRONINGEN-ZWOLLE | D | 1909-10-14 | 1914-08-22 |
| GRTR 0030B | GRONINGEN-ZWOLLE | D [!] | 19?? | 19?? |
| GRTR 0030B | GRONINGEN-ZWOLLE | E | 1905-01-27 | 19?? |
| GRTR 0030B | GRONINGEN-ZWOLLE | F | 1898-12-10 | 1908-11-17 |
| GRTR 0030B | GRONINGEN-ZWOLLE | G | 1904-07-03 | 1913-12-09 |
| GRTR 0030B | GRONINGEN-ZWOLLE | H | 1906-09-23 | 1912-03-09 |
| GRTR 0030B | GRONINGEN-ZWOLLE | ☪ | 1903-08-17 | 19?? |
| GRTR 0031A | HARLINGEN-NIEUWESCHANS | I | 1903-02-03 | 1913-08-04 |
| GRTR 0031A | HARLINGEN-NIEUWESCHANS | II | 1901-08-10 | 1902-09-28 |
| GRTR 0031A | HARLINGEN-NIEUWESCHANS | II ^A | 1915-03-08 | 1915-09-21 |
| GRTR 0031A | HARLINGEN-NIEUWESCHANS | III | 1902-04-03 | 1916-07-13 |
| GRTR 0031A | HARLINGEN-NIEUWESCHANS | IV | 1904-05-27 | 1917-07-03 |
| GRTR 0031A | HARLINGEN-NIEUWESCHANS | V | 1902-09-30 | 1913-02-28 |
| GRTR 0031A | HARLINGEN-NIEUWESCHANS | VI | 1904-07-05 | 1906-02-22 |
| GRTR 0031B | HARLINGEN-NIEUWESCHANS | A | 1908-11-24 | 1910-05-06 |
| GRTR 0031B | HARLINGEN-NIEUWESCHANS | A [!] | 1903-02-24 | 19?? |
| GRTR 0031B | HARLINGEN-NIEUWESCHANS | B | 1903-03-20 | 1915-09-16 |
| GRTR 0031B | HARLINGEN-NIEUWESCHANS | C | 1906-01-30 | 1915-08-12 |
| GRTR 0031B | HARLINGEN-NIEUWESCHANS | D | 1909-07-21 | 1911-12-06 |
| GRTR 0031B | HARLINGEN-NIEUWESCHANS | D [!] | 1916-05-19 | 19?? |
| GRTR 0031B | HARLINGEN-NIEUWESCHANS | E | 1905-08-10 | 1921-07-29 |
| GRTR 0031B | HARLINGEN-NIEUWESCHANS | F | 1912-09-10 | 19?? |
| GRTR 0031B | HARLINGEN-NIEUWESCHANS | ☪ | 1915-07-28 | 19?? |
| GRTR 0032A | HARLINGEN-STIENS | I | 1911-03-02 | 1912-09-23 |
| GRTR 0032A | HARLINGEN-STIENS | II | 1909-06-08 | 19?? |
| GRTR 0032B | HARLINGEN-STIENS | A | 19?? | 19?? |
| GRTR 0033A | HENGELO-RUURLO | I | 1913-12-11 | 1914-11-14 |
| GRTR 0033A | HENGELO-RUURLO | II | 1908-03-21 | 1914-01-22 |
| GRTR 0033A | HENGELO-RUURLO | III | 1909-04-12 | 19?? |
| GRTR 0033B | HENGELO-RUURLO | A | 1911-08-14 | 1912-03-14 |
| GRTR 0033B | HENGELO-RUURLO | B | 1909-04-05 | 1910-05-19 |
| GRTR 0034A | HOORN-MEDEMBLIK | I | 1906-03-26 | 1917-09-17 |
| GRTR 0034A | HOORN-MEDEMBLIK | II | 1911-04-22 | 19?? |
| GRTR 0034A | HOORN-MEDEMBLIK | III | 1898-07-28 | 1914-11-14 |
| GRTR 0034B | HOORN-MEDEMBLIK | A | 1910-10-07 | 19?? |
| GRTR 0034B | HOORN-MEDEMBLIK | B | 1910-12-21 | 1914-04-22 |
| GRTR 0034B | HOORN-MEDEMBLIK | C | 1909-12-13 | 1913-04-11 |
| GRTR 0035A | LEEWARDEN-DOKKUM | I | 1909-07-17 | 19?? |
| GRTR 0035A | LEEWARDEN-DOKKUM | II | 1904-09-09 | 1915-08-04 |
| GRTR 0035A | LEEWARDEN-DOKKUM | III | 1905-03-14 | 19?? |
| GRTR 0035B | LEEWARDEN-DOKKUM | A | 1906-08-20 | 1919-06-04 |
| GRTR 0035B | LEEWARDEN-DOKKUM | B | 1904-06-11 | 1910-12-03 |
| GRTR 0035B | LEEWARDEN-DOKKUM | C | 1911-08-12 | 1915-08-19 |
| GRTR 0036A | LEEWARDEN-MEPPEL | I | 1909-11-27 | 19?? |
| GRTR 0036A | LEEWARDEN-MEPPEL | I ^A | 1915-10-26 | 19?? |
| GRTR 0036A | LEEWARDEN-MEPPEL | II | 1903-07-06 | 1911-11-14 |
| GRTR 0036A | LEEWARDEN-MEPPEL | III | 1907-06-17 | 19?? |

| | | | | |
|------------|--------------------|------------------|------------|------------|
| GRTR 0036A | LEEWARDEN-MEPPEL | IV | 1899-09-12 | 1907-04-13 |
| GRTR 0036A | LEEWARDEN-MEPPEL | V | 1901-12-11 | 1903-07-02 |
| GRTR 0036A | LEEWARDEN-MEPPEL | VI | 1909-07-24 | 1909-08-12 |
| GRTR 0036A | LEEWARDEN-MEPPEL | VII | 1905-03-07 | 1905-03-26 |
| GRTR 0036A | LEEWARDEN-MEPPEL | VIII | 1907-03-11 | 1910-10-08 |
| GRTR 0036B | LEEWARDEN-MEPPEL | A | 1904-01-28 | 1910-10-04 |
| GRTR 0036B | LEEWARDEN-MEPPEL | B | 1904-09-27 | 1909-06-25 |
| GRTR 0036B | LEEWARDEN-MEPPEL | C | 1905-05-28 | 19?? |
| GRTR 0036B | LEEWARDEN-MEPPEL | D | 1909-08-07 | 1912-09-21 |
| GRTR 0036B | LEEWARDEN-MEPPEL | E | 1905-05-24 | 1905-12-21 |
| GRTR 0036B | LEEWARDEN-MEPPEL | F | 1902-10-16 | 1914-02-10 |
| GRTR 0036B | LEEWARDEN-MEPPEL | G | 1903-01-24 | 1914-11-15 |
| GRTR 0036B | LEEWARDEN-MEPPEL | H | 1909-07-14 | 19?? |
| GRTR 0037A | LEEWARDEN-STAVOREN | I | 1901-03-07 | 1911-11-29 |
| GRTR 0037A | LEEWARDEN-STAVOREN | II | 1906-03-05 | 1910-06-04 |
| GRTR 0037A | LEEWARDEN-STAVOREN | III | 1904-11-12 | 1914-11-05 |
| GRTR 0037A | LEEWARDEN-STAVOREN | IV | 1901-04-03 | 1906-07-11 |
| GRTR 0037A | LEEWARDEN-STAVOREN | V | 1904-10-07 | 1906-12-31 |
| GRTR 0037A | LEEWARDEN-STAVOREN | VI | 1906-07-24 | 1915-01-18 |
| GRTR 0037B | LEEWARDEN-STAVOREN | A | 1904-08-30 | 1908-09-06 |
| GRTR 0037B | LEEWARDEN-STAVOREN | B | 1906-10-29 | 19?? |
| GRTR 0037B | LEEWARDEN-STAVOREN | C | 1904-09-10 | 1915-06-10 |
| GRTR 0037B | LEEWARDEN-STAVOREN | D | 1912-08-20 | 1913-06-26 |
| GRTR 0038A | MAASTRICHT-AKEN | I | 1902-06-01 | 1913-04-09 |
| GRTR 0038A | MAASTRICHT-AKEN | II | 1896-07-20 | 1907-07-30 |
| GRTR 0038A | MAASTRICHT-AKEN | III | 1899-03-17 | 1911-07-21 |
| GRTR 0038A | MAASTRICHT-AKEN | IV | 1900-08-31 | 1913-04-09 |
| GRTR 0038A | MAASTRICHT-AKEN | V | 1899-06-09 | 1912-07-16 |
| GRTR 0038A | MAASTRICHT-AKEN | A ¹ | 19?? | 19?? |
| GRTR 0038B | MAASTRICHT-AKEN | B | 1901-07-03 | 1904-07-03 |
| GRTR 0038B | MAASTRICHT-AKEN | C | 1905-07-18 | 19?? |
| GRTR 0038B | MAASTRICHT-AKEN | D | 1906-07-25 | 19?? |
| GRTR 0038B | MAASTRICHT-AKEN | E | 1910-06-17 | 19?? |
| GRTR 0038B | MAASTRICHT-AKEN | F | 19?? | 19?? |
| GRTR 0039A | MAASTRICHT-VENLO | I | 1909-09-24 | 19?? |
| GRTR 0039A | MAASTRICHT-VENLO | II | 1909-06-02 | 19?? |
| GRTR 0039A | MAASTRICHT-VENLO | III | 1910-03-01 | 1910-09-14 |
| GRTR 0039A | MAASTRICHT-VENLO | IV | 1905-09-04 | 1909-08-27 |
| GRTR 0039A | MAASTRICHT-VENLO | V | 1907-06-07 | 19?? |
| GRTR 0039A | MAASTRICHT-VENLO | VI | 1909-08-15 | 1909-09-18 |
| GRTR 0039A | MAASTRICHT-VENLO | VII | 1908-05-13 | 19?? |
| GRTR 0039B | MAASTRICHT-VENLO | B | 1910-08-17 | 19?? |
| GRTR 0039B | MAASTRICHT-VENLO | D | 1911-03-01 | 19?? |
| GRTR 0039B | MAASTRICHT-VENLO | E | 19?? | 19?? |
| GRTR 0039B | MAASTRICHT-VENLO | F | 19?? | 19?? |
| GRTR 0039B | MAASTRICHT-VENLO | G | 19?? | 19?? |
| GRTR 0040A | MAASTRICHT-VENLOO | I | 1901-11-25 | 1908-07-15 |
| GRTR 0040A | MAASTRICHT-VENLOO | I ^{BIS} | 1900-12-21 | 1901-08-06 |
| GRTR 0040A | MAASTRICHT-VENLOO | II | 1902-02-26 | 1908-09-10 |
| GRTR 0040A | MAASTRICHT-VENLOO | III | 1906-02-22 | 1911-10-14 |
| GRTR 0040A | MAASTRICHT-VENLOO | IV | 1901-07-14 | 1902-10-26 |
| GRTR 0040A | MAASTRICHT-VENLOO | V | 1901-10-17 | 1904-07-29 |
| GRTR 0040A | MAASTRICHT-VENLOO | VI | 1903-11-02 | 1912-06-28 |
| GRTR 0040A | MAASTRICHT-VENLOO | VII | 19?? | 19?? |
| GRTR 0040B | MAASTRICHT-VENLOO | B | 1905-04-20 | 19?? |

| | | | | |
|------------|----------------------------|----------------|------------|------------|
| GRTR 0040B | MAASTRICHT-VENLOO | D | 19?? | 19?? |
| GRTR 0040B | MAASTRICHT-VENLOO | E | 19?? | 19?? |
| GRTR 0040B | MAASTRICHT-VENLOO | F | 1900-03-09 | 19?? |
| GRTR 0040B | MAASTRICHT-VENLOO | G | 19?? | 19?? |
| GRTR 0041A | MEPPEL-LEEWARDEN | II | 19?? | 19?? |
| GRTR 0041A | MEPPEL-LEEWARDEN | III | 19?? | 19?? |
| GRTR 0041A | MEPPEL-LEEWARDEN | IV | 19?? | 19?? |
| GRTR 0041A | MEPPEL-LEEWARDEN | V | 19?? | 19?? |
| GRTR 0041A | MEPPEL-LEEWARDEN | VII | 19?? | 19?? |
| GRTR 0041A | MEPPEL-LEEWARDEN | VIII | 19?? | 19?? |
| GRTR 0041B | MEPPEL-LEEWARDEN | A | 1915-11-04 | 19?? |
| GRTR 0041B | MEPPEL-LEEWARDEN | B | 1908-10-09 | 19?? |
| GRTR 0041B | MEPPEL-LEEWARDEN | D | 1911-08-28 | 19?? |
| GRTR 0041B | MEPPEL-LEEWARDEN | E | 1909-06-05 | 19?? |
| GRTR 0041B | MEPPEL-LEEWARDEN | F | 1915-08-20 | 19?? |
| GRTR 0041B | MEPPEL-LEEWARDEN | G | 1911-01-05 | 1913-05-31 |
| GRTR 0042A | NIEUWESCHANS-HARLINGEN | I | 1907-08-15 | 1909-08-02 |
| GRTR 0042A | NIEUWESCHANS-HARLINGEN | III | 1907-08-13 | 19?? |
| GRTR 0042A | NIEUWESCHANS-HARLINGEN | IV | 1912-12-24 | 19?? |
| GRTR 0042A | NIEUWESCHANS-HARLINGEN | VI | 1908-08-10 | 1911-01-11 |
| GRTR 0042B | NIEUWESCHANS-HARLINGEN | A | 1911-03-12 | 1916-10-20 |
| GRTR 0042B | NIEUWESCHANS-HARLINGEN | A ¹ | 19?? | 19?? |
| GRTR 0042B | NIEUWESCHANS-HARLINGEN | B | 1919-08-13 | 19?? |
| GRTR 0042B | NIEUWESCHANS-HARLINGEN | C | 19?? | 19?? |
| GRTR 0042B | NIEUWESCHANS-HARLINGEN | D | 1907-03-19 | 1913-12-08 |
| GRTR 0042B | NIEUWESCHANS-HARLINGEN | D ¹ | 19?? | 19?? |
| GRTR 0042B | NIEUWESCHANS-HARLINGEN | E | 1912-12-18 | 1919-09-08 |
| GRTR 0042B | NIEUWESCHANS-HARLINGEN | ☛ | 1917-11-10 | 19?? |
| GRTR 0043A | NIJMEGEN-VENLOO | I | 1902-09-20 | 19?? |
| GRTR 0043A | NIJMEGEN-VENLOO | II | 1899-07-25 | 19?? |
| GRTR 0043A | NIJMEGEN-VENLOO | III | 1906-07-27 | 1910-09-02 |
| GRTR 0043A | NIJMEGEN-VENLOO | IV | 1898-08-08 | 1912-05-21 |
| GRTR 0043B | NIJMEGEN-VENLOO | A | 1907-04-09 | 1911-10-22 |
| GRTR 0043B | NIJMEGEN-VENLOO | B | 1908-08-21 | 19?? |
| GRTR 0043B | NIJMEGEN-VENLOO | C | 19?? | 19?? |
| GRTR 0043B | NIJMEGEN-VENLOO | D | 1903-09-11 | 19?? |
| GRTR 0044 | ROODESCHOOL-GRONINGEN | II | 1913-09-29 | 19?? |
| GRTR 0044 | ROODESCHOOL-GRONINGEN | III | 1906-07-00 | 1913-01-00 |
| GRTR 0045 | ROTT:HARMELEN-AMST: | V | 1907-09-08 | 1908-02-00 |
| GRTR 0046A | ROTTERDAM-HOEK VAN HOLLAND | I | 1911-04-27 | 1913-01-21 |
| GRTR 0046A | ROTTERDAM-HOEK VAN HOLLAND | II | 19?? | 19?? |
| GRTR 0046A | ROTTERDAM-HOEK VAN HOLLAND | III | 1908-08-07 | 1912-09-28 |
| GRTR 0046A | ROTTERDAM-HOEK VAN HOLLAND | IV | 1911-06-07 | 19?? |
| GRTR 0046A | ROTTERDAM-HOEK VAN HOLLAND | V | 1909-08-14 | 1911-11-30 |
| GRTR 0046A | ROTTERDAM-HOEK VAN HOLLAND | VI | 1911-01-02 | 19?? |
| GRTR 0046B | ROTTERDAM-HOEK VAN HOLLAND | A | 19?? | 19?? |
| GRTR 0046B | ROTTERDAM-HOEK VAN HOLLAND | B | 1910-04-19 | 19?? |
| GRTR 0046B | ROTTERDAM-HOEK VAN HOLLAND | C | 1911-02-23 | 19?? |
| GRTR 0046B | ROTTERDAM-HOEK VAN HOLLAND | D | 19?? | 19?? |
| GRTR 0046B | ROTTERDAM-HOEK VAN HOLLAND | E | 19?? | 19?? |
| GRTR 0046B | ROTTERDAM-HOEK VAN HOLLAND | F | 19?? | 19?? |



| | | | | | |
|------------|-----------------|-----------------|-----------------|------------|------------|
| GRTR 0047A | ROTTERDAM-VENLO | (grote spaties) | I | 1910-07-20 | 1916-10-03 |
| GRTR 0047A | ROTTERDAM-VENLO | (grote spaties) | II | 1909-08-18 | 1911-05-30 |
| GRTR 0047A | ROTTERDAM-VENLO | (grote spaties) | III | 1907-09-27 | 1911-05-29 |
| GRTR 0047A | ROTTERDAM-VENLO | (grote spaties) | IV | 1905-05-15 | 1912-01-17 |
| GRTR 0047A | ROTTERDAM-VENLO | (grote spaties) | IV ^Δ | 1907-03-18 | 19?? |
| GRTR 0047A | ROTTERDAM-VENLO | (grote spaties) | V | 1908-05-23 | 1911-02-06 |
| GRTR 0047A | ROTTERDAM-VENLO | (grote spaties) | V ^Δ | 19?? | 19?? |
| GRTR 0047A | ROTTERDAM-VENLO | (grote spaties) | VI | 1906-04-18 | 1916-06-09 |
| GRTR 0047A | ROTTERDAM-VENLO | (grote spaties) | VII | 1907-09-27 | 1909-01-12 |
| GRTR 0047A | ROTTERDAM-VENLO | (grote spaties) | VIII | 1908-06-08 | 1913-01-23 |
| GRTR 0047B | ROTTERDAM-VENLO | (grote spaties) | A | 1907-06-14 | 1915-09-29 |
| GRTR 0047B | ROTTERDAM-VENLO | (grote spaties) | A [‡] | 19?? | 19?? |
| GRTR 0047B | ROTTERDAM-VENLO | (grote spaties) | B | 1907-05-29 | 1909-12-09 |
| GRTR 0047B | ROTTERDAM-VENLO | (grote spaties) | C | 1910-04-02 | 19?? |
| GRTR 0047B | ROTTERDAM-VENLO | (grote spaties) | D | 1909-07-23 | 1909-12-11 |
| GRTR 0047B | ROTTERDAM-VENLO | (grote spaties) | D [‡] | 19?? | 19?? |
| GRTR 0047B | ROTTERDAM-VENLO | (grote spaties) | E | 1906-05-20 | 1909-11-23 |
| GRTR 0047B | ROTTERDAM-VENLO | (grote spaties) | F | 1908-07-25 | 1908-11-14 |
| GRTR 0047B | ROTTERDAM-VENLO | (grote spaties) | G | 1915-03-05 | 1917-03-22 |
| GRTR 0047B | ROTTERDAM-VENLO | (grote spaties) | H | 19?? | 19?? |



| | | | | | |
|------------|------------------|------------------|-----------------|------------|------------|
| GRTR 0047C | ROTTERDAM-VENLO | (kleine spaties) | I | 1908-08-24 | 19?? |
| GRTR 0047C | ROTTERDAM-VENLO | (kleine spaties) | II | 1911-05-30 | 19?? |
| GRTR 0047C | ROTTERDAM-VENLO | (kleine spaties) | III | 1908-04-11 | 19?? |
| GRTR 0047C | ROTTERDAM-VENLO | (kleine spaties) | IV | 1909-10-09 | 19?? |
| GRTR 0047C | ROTTERDAM-VENLO | (kleine spaties) | IV ^Δ | 19?? | 19?? |
| GRTR 0047C | ROTTERDAM-VENLO | (kleine spaties) | V | 19?? | 19?? |
| GRTR 0047C | ROTTERDAM-VENLO | (kleine spaties) | V ^Δ | 19?? | 19?? |
| GRTR 0047C | ROTTERDAM-VENLO | (kleine spaties) | VI | 19?? | 19?? |
| GRTR 0047C | ROTTERDAM-VENLO | (kleine spaties) | VII | 19?? | 19?? |
| GRTR 0047C | ROTTERDAM-VENLO | (kleine spaties) | VIII | 19?? | 19?? |
| GRTR 0047D | ROTTERDAM-VENLO | (kleine spaties) | A | 19?? | 19?? |
| GRTR 0047D | ROTTERDAM-VENLO | (kleine spaties) | A [‡] | 19?? | 19?? |
| GRTR 0047D | ROTTERDAM-VENLO | (kleine spaties) | B | 19?? | 19?? |
| GRTR 0047D | ROTTERDAM-VENLO | (kleine spaties) | C | 19?? | 19?? |
| GRTR 0047D | ROTTERDAM-VENLO | (kleine spaties) | D | 19?? | 19?? |
| GRTR 0047D | ROTTERDAM-VENLO | (kleine spaties) | D [‡] | 19?? | 19?? |
| GRTR 0047D | ROTTERDAM-VENLO | (kleine spaties) | E | 19?? | 19?? |
| GRTR 0047D | ROTTERDAM-VENLO | (kleine spaties) | F | 19?? | 19?? |
| GRTR 0047D | ROTTERDAM-VENLO | (kleine spaties) | G | 1910-07-20 | 1916-09-15 |
| GRTR 0047D | ROTTERDAM-VENLO | (kleine spaties) | H | 19?? | 19?? |
| GRTR 0048A | ROTTERDAM-VENLOO | | I | 19?? | 19?? |
| GRTR 0048A | ROTTERDAM-VENLOO | | II | 1897-08-07 | 1910-11-12 |
| GRTR 0048A | ROTTERDAM-VENLOO | | III | 1903-09-28 | 1911-09-21 |
| GRTR 0048A | ROTTERDAM-VENLOO | | IV | 1901-07-19 | 1905-03-14 |
| GRTR 0048A | ROTTERDAM-VENLOO | | IV ^Δ | 1903-10-06 | 19?? |
| GRTR 0048A | ROTTERDAM-VENLOO | | V | 1902-03-27 | 1904-09-03 |
| GRTR 0048A | ROTTERDAM-VENLOO | | VI | 1898-07-26 | 1906-04-18 |

| | | | | |
|------------|----------------------|----------------|------------|------------|
| GRTR 0048A | ROTTERDAM-VENLOO | VII | 1898-07-26 | 1911-06-30 |
| GRTR 0048A | ROTTERDAM-VENLOO | VIII | 1908-10-15 | 19?? |
| GRTR 0048B | ROTTERDAM-VENLOO | A | 1904-12-26 | 1907-07-08 |
| GRTR 0048B | ROTTERDAM-VENLOO | B | 1899-10-30 | 19?? |
| GRTR 0048B | ROTTERDAM-VENLOO | C | 1903-09-29 | 1905-01-10 |
| GRTR 0048B | ROTTERDAM-VENLOO | D | 1901-05-30 | 1909-10-27 |
| GRTR 0048B | ROTTERDAM-VENLOO | D [!] | 19?? | 19?? |
| GRTR 0048B | ROTTERDAM-VENLOO | E | 1903-08-23 | 1909-08-05 |
| GRTR 0048B | ROTTERDAM-VENLOO | F | 1909-12-22 | 19?? |
| GRTR 0048B | ROTTERDAM-VENLOO | G | 1910-07-19 | 1915-10-26 |
| GRTR 0048B | ROTTERDAM-VENLOO | ☛ | 1908-09-21 | 19?? |
| GRTR 0049A | ROTTERDAM-VLISSINGEN | IV | 1898-08-19 | 1900-04-21 |
| GRTR 0049A | ROTTERDAM-VLISSINGEN | V | 1900-06-21 | 1908-09-21 |
| GRTR 0049A | ROTTERDAM-VLISSINGEN | VII | 1900-02-01 | 1906-08-16 |
| GRTR 0049B | ROTTERDAM-VLISSINGEN | B | 1904-09-10 | 19?? |
| GRTR 0049B | ROTTERDAM-VLISSINGEN | E | 19?? | 19?? |
| GRTR 0049B | ROTTERDAM-VLISSINGEN | J | 1911-03-12 | 1912-04-08 |
| GRTR 0050A | SITTARD-HERZOGENRATH | I | 1897-07-10 | 19?? |
| GRTR 0050A | SITTARD-HERZOGENRATH | II | 1900-08-04 | 1904-02-28 |
| GRTR 0050A | SITTARD-HERZOGENRATH | III | 1899-08-03 | 1914-12-10 |
| GRTR 0050A | SITTARD-HERZOGENRATH | IV | 1907-04-16 | 1909-11-08 |
| GRTR 0050B | SITTARD-HERZOGENRATH | A | 1897-08-23 | 1910-12-24 |
| GRTR 0050B | SITTARD-HERZOGENRATH | B | 1898-09-29 | 1911-11-15 |
| GRTR 0050B | SITTARD-HERZOGENRATH | C | 1905-08-24 | 1909-03-10 |
| GRTR 0050B | SITTARD-HERZOGENRATH | D | 1909-08-16 | 1914-06-30 |
| GRTR 0051A | STADSKANAAL-ASSEN | I | 19?? | 19?? |
| GRTR 0051A | STADSKANAAL-ASSEN | II | 19?? | 19?? |
| GRTR 0051A | STADSKANAAL-ASSEN | III | 19?? | 19?? |
| GRTR 0051A | STADSKANAAL-ASSEN | IV | 19?? | 19?? |
| GRTR 0051A | STADSKANAAL-ASSEN | V | 1910-05-11 | 19?? |
| GRTR 0051B | STADSKANAAL-ASSEN | A | 1906-11-01 | 19?? |
| GRTR 0051B | STADSKANAAL-ASSEN | B | 1906-10-27 | 1908-03-12 |
| GRTR 0051B | STADSKANAAL-ASSEN | C | 1906-11-02 | 19?? |
| GRTR 0051B | STADSKANAAL-ASSEN | D | 1908-07-20 | 19?? |
| GRTR 0051B | STADSKANAAL-ASSEN | E | 1908-06-15 | 1909-08-05 |
| GRTR 0052A | STAVOREN-LEEWARDEN | I | 1909-09-27 | 1911-10-31 |
| GRTR 0052A | STAVOREN-LEEWARDEN | II | 19?? | 19?? |
| GRTR 0052A | STAVOREN-LEEWARDEN | III | 1912-07-18 | 19?? |
| GRTR 0052A | STAVOREN-LEEWARDEN | IV | 1911-08-07 | 1915-10-18 |
| GRTR 0052A | STAVOREN-LEEWARDEN | V | 1911-10-12 | 19?? |
| GRTR 0052A | STAVOREN-LEEWARDEN | VI | 1910-07-13 | 1913-03-26 |
| GRTR 0052B | STAVOREN-LEEWARDEN | A | 1911-11-17 | 19?? |
| GRTR 0052B | STAVOREN-LEEWARDEN | A [!] | 19?? | 19?? |
| GRTR 0052B | STAVOREN-LEEWARDEN | B | 1911-11-17 | 19?? |
| GRTR 0052B | STAVOREN-LEEWARDEN | C | 1910-08-04 | 19?? |
| GRTR 0052B | STAVOREN-LEEWARDEN | C [!] | 19?? | 19?? |
| GRTR 0052B | STAVOREN-LEEWARDEN | D | 1911-11-17 | 19?? |
| GRTR 0052B | STAVOREN-LEEWARDEN | E | 1909-03-17 | 19?? |
| GRTR 0053A | UTRECHT-BOKSTEL | I | 19?? | 19?? |
| GRTR 0053A | UTRECHT-BOKSTEL | II | 1912-07-26 | 1914-03-09 |
| GRTR 0053A | UTRECHT-BOKSTEL | III | 1900-04-21 | 1904-06-25 |
| GRTR 0053A | UTRECHT-BOKSTEL | IV | 1905-11-13 | 1907-06-08 |
| GRTR 0053A | UTRECHT-BOKSTEL | V | 1904-06-01 | 1904-08-26 |
| GRTR 0053A | UTRECHT-BOKSTEL | VI | 1903-06-03 | 1914-03-05 |
| GRTR 0053A | UTRECHT-BOKSTEL | VII | 1899-06-21 | 1905-08-06 |

| | | | | |
|------------|-------------------|-------------------|------------|------------|
| GRTR 0053A | UTRECHT-BOKSTEL | VIII | 19?? | 19?? |
| GRTR 0053A | UTRECHT-BOKSTEL | IX | 1911-06-23 | 19?? |
| GRTR 0053A | UTRECHT-BOKSTEL | X | 19?? | 19?? |
| GRTR 0053A | UTRECHT-BOKSTEL | XI | 1915-09-06 | 1918-05-29 |
| GRTR 0053B | UTRECHT-BOKSTEL | A | 1899-03-28 | 1917-08-27 |
| GRTR 0053B | UTRECHT-BOKSTEL | A ¹ | 1918-05-31 | 19?? |
| GRTR 0053B | UTRECHT-BOKSTEL | B | 1899-01-07 | 1906-11-28 |
| GRTR 0053B | UTRECHT-BOKSTEL | B ¹ | 1899-10-10 | 19?? |
| GRTR 0053B | UTRECHT-BOKSTEL | C | 1900-03-21 | 1904-02-11 |
| GRTR 0053B | UTRECHT-BOKSTEL | C ¹ | 19?? | 19?? |
| GRTR 0053B | UTRECHT-BOKSTEL | D | 1911-02-10 | 19?? |
| GRTR 0053B | UTRECHT-BOKSTEL | D ¹ | 1918-07-01 | 1919-06-11 |
| GRTR 0053B | UTRECHT-BOKSTEL | E | 1900-07-06 | 1904-11-02 |
| GRTR 0053B | UTRECHT-BOKSTEL | F | 1904-11-02 | 19?? |
| GRTR 0053B | UTRECHT-BOKSTEL | F ¹ | 19?? | 19?? |
| GRTR 0053B | UTRECHT-BOKSTEL | G | 1910-11-08 | 19?? |
| GRTR 0053B | UTRECHT-BOKSTEL | G ¹ | 19?? | 19?? |
| GRTR 0053B | UTRECHT-BOKSTEL | H | 19?? | 19?? |
| GRTR 0054A | UTRECHT-BOXTEL | II | 1911-08-01 | 19?? |
| GRTR 0054A | UTRECHT-BOXTEL | II ^B | 19?? | 19?? |
| GRTR 0054A | UTRECHT-BOXTEL | VI | 1913-01-04 | 1913-04-17 |
| GRTR 0054A | UTRECHT-BOXTEL | VIII | 19?? | 19?? |
| GRTR 0054A | UTRECHT-BOXTEL | VIII ^A | 19?? | 19?? |
| GRTR 0054A | UTRECHT-BOXTEL | IX | 19?? | 19?? |
| GRTR 0054A | UTRECHT-BOXTEL | XI | 19?? | 19?? |
| GRTR 0054B | UTRECHT-BOXTEL | A | 1911-11-06 | 1916-07-21 |
| GRTR 0054B | UTRECHT-BOXTEL | A ¹ | 19?? | 19?? |
| GRTR 0054B | UTRECHT-BOXTEL | B | 1911-04-04 | 19?? |
| GRTR 0054B | UTRECHT-BOXTEL | C | 1912-08-11 | 19?? |
| GRTR 0054B | UTRECHT-BOXTEL | D | 1912-10-11 | 19?? |
| GRTR 0054B | UTRECHT-BOXTEL | D ¹ | 1918-12-21 | 19?? |
| GRTR 0054B | UTRECHT-BOXTEL | F | 19?? | 19?? |
| GRTR 0054B | UTRECHT-BOXTEL | G | 1916-07-12 | 19?? |
| GRTR 0054B | UTRECHT-BOXTEL | G ¹ | 19?? | 19?? |
| GRTR 0054B | UTRECHT-BOXTEL | H | 1909-09-21 | 1911-02-06 |
| GRTR 0055A | UTRECHT-LEIDEN | I | 1900-02-04 | 1906-02-16 |
| GRTR 0055A | UTRECHT-LEIDEN | II | 1898-05-28 | 1905-06-20 |
| GRTR 0055A | UTRECHT-LEIDEN | III | 1898-10-15 | 1901-03-16 |
| GRTR 0055A | UTRECHT-LEIDEN | IV | 1898-06-21 | 1912-05-14 |
| GRTR 0055A | UTRECHT-LEIDEN | V | 1904-08-12 | 1913-09-23 |
| GRTR 0055B | UTRECHT-LEIDEN | A | 1901-04-12 | 1912-05-08 |
| GRTR 0055B | UTRECHT-LEIDEN | B | 1900-09-09 | 1918-01-15 |
| GRTR 0055B | UTRECHT-LEIDEN | C | 1898-04-23 | 1918-11-20 |
| GRTR 0055B | UTRECHT-LEIDEN | D | 1913-01-31 | 1913-05-26 |
| GRTR 0055B | UTRECHT-LEIDEN | E | 19?? | 19?? |
| GRTR 0055B | UTRECHT-LEIDEN | F | 19?? | 19?? |
| GRTR 0055B | UTRECHT-LEIDEN | ° | 1911-04-07 | 19?? |
| GRTR 0056A | UTRECHT-ROTTERDAM | I | 1902-07-28 | 1916-01-21 |
| GRTR 0056A | UTRECHT-ROTTERDAM | II | 1903-12-23 | 1913-08-31 |
| GRTR 0056A | UTRECHT-ROTTERDAM | III | 1907-09-18 | 19?? |
| GRTR 0056A | UTRECHT-ROTTERDAM | IV | 1899-04-07 | 1914-08-09 |
| GRTR 0056A | UTRECHT-ROTTERDAM | V | 1900-05-22 | 1914-07-07 |
| GRTR 0056A | UTRECHT-ROTTERDAM | VI | 1899-01-04 | 1908-01-12 |
| GRTR 0056A | UTRECHT-ROTTERDAM | VII | 1898-08-25 | 1915-01-02 |
| GRTR 0056A | UTRECHT-ROTTERDAM | VII ^A | 1914-03-03 | 1914-12-15 |
| GRTR 0056A | UTRECHT-ROTTERDAM | VIII | 1908-08-08 | 19?? |

| | | | | |
|------------|-------------------|----------------|---------------|---------------|
| GRTR 0056A | UTRECHT-ROTTERDAM | IX | 1901-01-26 | 1909-04-07 |
| GRTR 0056B | UTRECHT-ROTTERDAM | A | 1909-07-23 | 1910-09-19 |
| GRTR 0056B | UTRECHT-ROTTERDAM | B | 1907-09-05 | 1911-09-02 |
| GRTR 0056B | UTRECHT-ROTTERDAM | C | 1908-12-16 | 1913-12-16 |
| GRTR 0056B | UTRECHT-ROTTERDAM | D | 1901-01-11 | 1912-06-06 |
| GRTR 0056B | UTRECHT-ROTTERDAM | D [!] | 1911-03-05 | 1914-06-05 |
| GRTR 0056B | UTRECHT-ROTTERDAM | E | 1905-07-01 | 1911-10-12 *) |
| GRTR 0056B | UTRECHT-ROTTERDAM | F | 1905-02-02 | 1911-03-17 |
| GRTR 0056B | UTRECHT-ROTTERDAM | G | 1903-06-13 | 1911-03-17 |
| GRTR 0056B | UTRECHT-ROTTERDAM | H | 1909-11-08 | 1917-07-06 |
| GRTR 0056B | UTRECHT-ROTTERDAM | J | 1906-06-03 | 1910-12-24 |
| GRTR 0057A | UTRECHT-ZWOLLE | III | 19?? | 19?? |
| GRTR 0057A | UTRECHT-ZWOLLE | V | 1911-10-12 *) | 19?? |
| GRTR 0057A | UTRECHT-ZWOLLE | VI | 1911-10-12 | 1914-05-30 |
| GRTR 0057A | UTRECHT-ZWOLLE | VIII | 19?? | 19?? |
| GRTR 0057B | UTRECHT-ZWOLLE | A | 1915-08-06 | 19?? |
| GRTR 0057B | UTRECHT-ZWOLLE | B | 19?? | 19?? |
| GRTR 0057B | UTRECHT-ZWOLLE | C | 1907-09-14 | 1914-09-20 |
| GRTR 0057B | UTRECHT-ZWOLLE | D | 19?? | 19?? |
| GRTR 0057B | UTRECHT-ZWOLLE | E | 1908-08-28 | 19?? |
| GRTR 0057B | UTRECHT-ZWOLLE | E [!] | 1914-06-18 | 19?? |
| GRTR 0057B | UTRECHT-ZWOLLE | F | 1909-08-26 | 1912-11-18 |
| GRTR 0058A | VENLO-MAASTRICHT | II | 19?? | 19?? |
| GRTR 0058A | VENLO-MAASTRICHT | III | 1908-05-21 | 1911-11-10 |
| GRTR 0058A | VENLO-MAASTRICHT | IV | 1906-07-31 | 1907-01-10 |
| GRTR 0058A | VENLO-MAASTRICHT | V | 1909-03-30 | 19?? |
| GRTR 0058A | VENLO-MAASTRICHT | VI | 1905-08-21 | 19?? |
| GRTR 0058A | VENLO-MAASTRICHT | VII | 1910-07-14 | 19?? |
| GRTR 0058B | VENLO-MAASTRICHT | A | 1906-06-24 | 19?? |
| GRTR 0058B | VENLO-MAASTRICHT | C | 1910-07-07 | 19?? |
| GRTR 0058B | VENLO-MAASTRICHT | D | 1909-02-01 | 19?? |
| GRTR 0058B | VENLO-MAASTRICHT | E | 19?? | 19?? |
| GRTR 0058B | VENLO-MAASTRICHT | F | 19?? | 19?? |



| | | | | |
|------------|---------------------------------------|------------------|------------|------------|
| GRTR 0059A | VENLOO-MAASTRICHT (foutieve benaming) | I | 1900-08-21 | 1903-02-13 |
| GRTR 0059A | VENLOO-MAASTRICHT (foutieve benaming) | I ^{BIS} | 1899-08-06 | 19?? |
| GRTR 0059A | VENLOO-MAASTRICHT (foutieve benaming) | II | 1898-03-02 | 1911-08-17 |
| GRTR 0059A | VENLOO-MAASTRICHT (foutieve benaming) | III | 1898-12-16 | 1905-08-17 |
| GRTR 0059A | VENLOO-MAASTRICHT (foutieve benaming) | IV | 1905-06-29 | 1911-12-11 |
| GRTR 0059A | VENLOO-MAASTRICHT (foutieve benaming) | V | 1899-08-07 | 1904-03-17 |
| GRTR 0059A | VENLOO-MAASTRICHT (foutieve benaming) | VI | 1898-10-28 | 1912-02-23 |
| GRTR 0059B | VENLOO-MAASTRICHT (foutieve benaming) | B | 1900-02-13 | 19?? |
| GRTR 0059B | VENLOO-MAASTRICHT (foutieve benaming) | D | 1900-03-09 | 1903-01-14 |
| GRTR 0059B | VENLOO-MAASTRICHT (foutieve benaming) | E | 1900-07-21 | 19?? |
| GRTR 0059B | VENLOO-MAASTRICHT (foutieve benaming) | F | 19?? | 19?? |
| GRTR 0059B | VENLOO-MAASTRICHT (foutieve benaming) | G | 1901-12-17 | 19?? |
| GRTR 0060 | VENLOO-MAASTRICHT (juiste benaming) | I | 1905-09-14 | 19?? |
| GRTR 0060 | VENLOO-MAASTRICHT (juiste benaming) | I ^{BIS} | 19?? | 19?? |
| GRTR 0060 | VENLOO-MAASTRICHT (juiste benaming) | II | 1906-01-15 | 19?? |
| GRTR 0060 | VENLOO-MAASTRICHT (juiste benaming) | III | 1902-09-29 | 1908-09-28 |
| GRTR 0060 | VENLOO-MAASTRICHT (juiste benaming) | IV | 1899-04-29 | 1912-07-25 |

| | | | | |
|-----------|-------------------------------------|-----|------------|------------|
| GRTR 0060 | VENLOO-MAASTRICHT (juiste benaming) | V | 1900-03-24 | 1908-11-26 |
| GRTR 0060 | VENLOO-MAASTRICHT (juiste benaming) | VI | 1905-08-31 | 1911-12-18 |
| GRTR 0060 | VENLOO-MAASTRICHT (juiste benaming) | VII | 1907-01-18 | 1908-05-08 |
| GRTR 0060 | VENLOO-MAASTRICHT (juiste benaming) | A | 19?? | 19?? |
| GRTR 0060 | VENLOO-MAASTRICHT (juiste benaming) | B | 1911-07-28 | 19?? |
| GRTR 0060 | VENLOO-MAASTRICHT (juiste benaming) | C | 1911-07-29 | 19?? |
| GRTR 0060 | VENLOO-MAASTRICHT (juiste benaming) | D | 1907-07-04 | 1909-07-07 |
| GRTR 0060 | VENLOO-MAASTRICHT (juiste benaming) | F | 19?? | 19?? |



| | | | | |
|------------|--------------------------------|-----|------------|------------|
| GRTR 0061A | VENLO-NIJMEGEN (grote spaties) | I | 1901-12-16 | 19?? |
| GRTR 0061A | VENLO-NIJMEGEN (grote spaties) | II | 1909-11-23 | 19?? |
| GRTR 0061A | VENLO-NIJMEGEN (grote spaties) | III | 1908-08-27 | 1910-11-22 |
| GRTR 0061A | VENLO-NIJMEGEN (grote spaties) | IV | 19?? | |
| GRTR 0061B | VENLO-NIJMEGEN (grote spaties) | A | 1909-07-20 | 1910-11-24 |
| GRTR 0061B | VENLO-NIJMEGEN (grote spaties) | B | 1909-06-20 | 19?? |
| GRTR 0061B | VENLO-NIJMEGEN (grote spaties) | D | 1907-12-30 | 19?? |



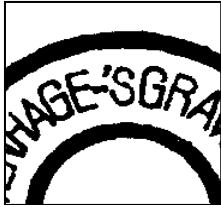
| | | | | |
|------------|---------------------------------|-----|------------|------------|
| GRTR 0061C | VENLO-NIJMEGEN (kleine spaties) | I | 19?? | 19?? |
| GRTR 0061C | VENLO-NIJMEGEN (kleine spaties) | II | 19?? | 19?? |
| GRTR 0061C | VENLO-NIJMEGEN (kleine spaties) | III | 19?? | 19?? |
| GRTR 0061C | VENLO-NIJMEGEN (kleine spaties) | IV | 19?? | 19?? |
| GRTR 0061D | VENLO-NIJMEGEN (kleine spaties) | A | 19?? | 19?? |
| GRTR 0061D | VENLO-NIJMEGEN (kleine spaties) | B | 19?? | 19?? |
| GRTR 0061D | VENLO-NIJMEGEN (kleine spaties) | C | 1912-03-06 | 19?? |
| GRTR 0061D | VENLO-NIJMEGEN (kleine spaties) | D | 19?? | 19?? |
| GRTR 0062A | VENLOO-NIJMEGEN | I | 19?? | 19?? |
| GRTR 0062A | VENLOO-NIJMEGEN | II | 19?? | 19?? |
| GRTR 0062A | VENLOO-NIJMEGEN | III | 19?? | 19?? |
| GRTR 0062A | VENLOO-NIJMEGEN | IV | 19?? | 19?? |
| GRTR 0062B | VENLOO-NIJMEGEN | A | 19?? | 19?? |
| GRTR 0062B | VENLOO-NIJMEGEN | B | 19?? | 19?? |
| GRTR 0062B | VENLOO-NIJMEGEN | D | 1899-05-23 | 19?? |
| GRTR 0063A | WINTERSWIJK-ZEVENAAR | I | 1913-10-13 | 19?? |
| GRTR 0063A | WINTERSWIJK-ZEVENAAR | II | 1911-10-03 | 19?? |
| GRTR 0063A | WINTERSWIJK-ZEVENAAR | III | 19?? | 19?? |
| GRTR 0063B | WINTERSWIJK-ZEVENAAR | A | 1911-03-14 | 1917-01-25 |
| GRTR 0063B | WINTERSWIJK-ZEVENAAR | B | 1912-09-20 | 19?? |
| GRTR 0063B | WINTERSWIJK-ZEVENAAR | C | 1910-08-18 | 19?? |
| GRTR 0064 | ZUTPHEN-APELDOORN | E | 1905-05-00 | 1905-06-23 |
| GRTR 0064 | ZUTPHEN-APELDOORN | F | 19?? | 19?? |
| GRTR 0064 | ZUTPHEN-APELDOORN | ☛ | 19?? | 19?? |
| GRTR 0065A | ZUTPHEN-WINTERSWIJK | I | 19?? | 19?? |
| GRTR 0065A | ZUTPHEN-WINTERSWIJK | II | 19?? | 19?? |
| GRTR 0065A | ZUTPHEN-WINTERSWIJK | III | 1904-01-20 | 1907-05-31 |
| GRTR 0065A | ZUTPHEN-WINTERSWIJK | IV | 1910-03-17 | 19?? |
| GRTR 0065A | ZUTPHEN-WINTERSWIJK | V | 1908-12-07 | 19?? |
| GRTR 0065B | ZUTPHEN-WINTERSWIJK | A | 1900-10-30 | 1911-02-18 |
| GRTR 0065B | ZUTPHEN-WINTERSWIJK | B | 1902-07-03 | 1911-08-24 |

| | | | | |
|------------|-------------------------|----------------|---------------|------------|
| GRTR 0065B | ZUTPHEN-WINTERSWIJK | C | 1906-08-27 | 1914-04-12 |
| GRTR 0065B | ZUTPHEN-WINTERSWIJK | C ¹ | 19?? | 19?? |
| GRTR 0065B | ZUTPHEN-WINTERSWIJK | D | 1901-08-19 | 1912-05-30 |
| GRTR 0065B | ZUTPHEN-WINTERSWIJK | E | 1907-06-25 | 1911-02-02 |
| GRTR 0065B | ZUTPHEN-WINTERSWIJK | F | 19?? | 19?? |
| GRTR 0066A | ZUTPHEN-ZWOLLE | II | 19?? | 19?? |
| GRTR 0066A | ZUTPHEN-ZWOLLE | III | 19?? | 19?? |
| GRTR 0066A | ZUTPHEN-ZWOLLE | VII | 19?? | 19?? |
| GRTR 0066B | ZUTPHEN-ZWOLLE | A | 1908-10-05 | 19?? |
| GRTR 0066B | ZUTPHEN-ZWOLLE | B | 1911-10-12 *) | 19?? |
| GRTR 0066B | ZUTPHEN-ZWOLLE | C | 1911-10-12 *) | 19?? |
| GRTR 0066B | ZUTPHEN-ZWOLLE | D | 1911-10-12 *) | 19?? |
| GRTR 0066B | ZUTPHEN-ZWOLLE | E | 19?? | 19?? |
| GRTR 0067A | ZWALUWE-'sHERTOGENBOSCH | I | 1906-08-24 | 1907-12-14 |
| GRTR 0067A | ZWALUWE-'sHERTOGENBOSCH | II | 1902-08-28 | 1914-03-05 |
| GRTR 0067A | ZWALUWE-'sHERTOGENBOSCH | III | 1899-01-11 | 1911-03-02 |
| GRTR 0067A | ZWALUWE-'sHERTOGENBOSCH | IV | 1896-12-12 | 1912-08-11 |
| GRTR 0067B | ZWALUWE-'sHERTOGENBOSCH | A | 1900-02-27 | 1910-06-07 |
| GRTR 0067B | ZWALUWE-'sHERTOGENBOSCH | B | 1902-09-08 | 1909-07-26 |
| GRTR 0067B | ZWALUWE-'sHERTOGENBOSCH | C | 1902-08-06 | 1912-08-26 |
| GRTR 0067B | ZWALUWE-'sHERTOGENBOSCH | D | 1914-02-03 | 19?? |
| GRTR 0068A | ZWOLLE-COEVORDEN | II | 19?? | 19?? |
| GRTR 0068A | ZWOLLE-COEVORDEN | III | 1906-08-23 | 1909-11-03 |
| GRTR 0068A | ZWOLLE-COEVORDEN | IV | 1911-06-23 | 19?? |
| GRTR 0068A | ZWOLLE-COEVORDEN | V | 1912-06-28 | 1920-10-04 |
| GRTR 0068B | ZWOLLE-COEVORDEN | A | 1913-03-21 | 1919-09-22 |
| GRTR 0068B | ZWOLLE-COEVORDEN | B | 1908-08-11 | 1915-02-11 |
| GRTR 0068B | ZWOLLE-COEVORDEN | C | 1907-08-14 | 1911-12-11 |
| GRTR 0068B | ZWOLLE-COEVORDEN | D | 1906-08-24 | 1913-10-27 |
| GRTR 0069A | ZWOLLE-ENSCHEDÉ | I | 19?? | 19?? |
| GRTR 0069A | ZWOLLE-ENSCHEDÉ | II | 1902-10-09 | 1911-01-20 |
| GRTR 0069A | ZWOLLE-ENSCHEDÉ | III | 19?? | 19?? |
| GRTR 0069A | ZWOLLE-ENSCHEDÉ | IV | 1902-04-08 | 1906-07-25 |
| GRTR 0069A | ZWOLLE-ENSCHEDÉ | V | 1919-08-25 | 19?? |
| GRTR 0069B | ZWOLLE-ENSCHEDÉ | A | 1904-08-02 | 1908-02-10 |
| GRTR 0069B | ZWOLLE-ENSCHEDÉ | B | 1901-10-12 | 1911-02-08 |
| GRTR 0069B | ZWOLLE-ENSCHEDÉ | C | 1903-08-31 | 1910-08-19 |
| GRTR 0069B | ZWOLLE-ENSCHEDÉ | D | 1903-02-17 | 1917-12-04 |
| GRTR 0069B | ZWOLLE-ENSCHEDÉ | ☛ | 19?? | 19?? |
| GRTR 0070A | ZWOLLE-GRONINGEN | I | 1906-06-05 | 1915-03-15 |
| GRTR 0070A | ZWOLLE-GRONINGEN | II | 1908-09-07 | 19?? |
| GRTR 0070A | ZWOLLE-GRONINGEN | III | 1902-08-14 | 1907-10-22 |
| GRTR 0070A | ZWOLLE-GRONINGEN | IV | 1903-10-16 | 19?? |
| GRTR 0070A | ZWOLLE-GRONINGEN | V | 19?? | 19?? |
| GRTR 0070A | ZWOLLE-GRONINGEN | VI | 1905-01-23 | 1912-02-19 |
| GRTR 0070A | ZWOLLE-GRONINGEN | VII | 1913-04-10 | 1918-04-10 |
| GRTR 0070A | ZWOLLE-GRONINGEN | VIII | 1911-03-21 | 19?? |
| GRTR 0070B | ZWOLLE-GRONINGEN | A | 1901-03-01 | 1908-08-13 |
| GRTR 0070B | ZWOLLE-GRONINGEN | B | 1899-05-27 | 1913-12-09 |
| GRTR 0070B | ZWOLLE-GRONINGEN | C | 1900-08-31 | 1917-05-07 |
| GRTR 0070B | ZWOLLE-GRONINGEN | C ¹ | 19?? | 19?? |
| GRTR 0070B | ZWOLLE-GRONINGEN | D | 1903-11-16 | 19?? |
| GRTR 0070B | ZWOLLE-GRONINGEN | D ¹ | 1905-05-24 | 19?? |
| GRTR 0070B | ZWOLLE-GRONINGEN | E | 1899-11-21 | 1912-10-06 |
| GRTR 0070B | ZWOLLE-GRONINGEN | F | 1902-07-23 | 1908-05-20 |

| | | | | |
|------------|------------------|----------------|------------|------------|
| GRTR 0070B | ZWOLLE-GRONINGEN | G | 1900-08-07 | 1911-11-11 |
| GRTR 0070B | ZWOLLE-GRONINGEN | H | 1910-02-17 | 19?? |
| GRTR 0070B | ZWOLLE-GRONINGEN | ☛ | 1903-11-07 | 19?? |
| GRTR 0071 | ZWOLLE-KAMPEN | 12-6V | 1913-04-04 | 19?? |
| GRTR 0071 | ZWOLLE-KAMPEN | 8-9V | 1911-10-26 | 19?? |
| GRTR 0071 | ZWOLLE-KAMPEN | 10-11V | 1913-09-05 | 19?? |
| GRTR 0071 | ZWOLLE-KAMPEN | 12-1N | 1916-08-14 | 19?? |
| GRTR 0071 | ZWOLLE-KAMPEN | 2-3N | 1910-09-15 | 1916-07-31 |
| GRTR 0071 | ZWOLLE-KAMPEN | 4-5N | 1912-05-22 | 19?? |
| GRTR 0071 | ZWOLLE-KAMPEN | 5-6N | 1909-08-12 | 1913-09-12 |
| GRTR 0071 | ZWOLLE-KAMPEN | 7-8N | 1915-05-12 | 19?? |
| GRTR 0071 | ZWOLLE-KAMPEN | 8-9N | 1910-05-14 | 19?? |
| GRTR 0072A | ZWOLLE-UTRECHT | I | 1904-06-10 | 1909-10-13 |
| GRTR 0072A | ZWOLLE-UTRECHT | I ^A | 19?? | 19?? |
| GRTR 0072A | ZWOLLE-UTRECHT | II | 1906-08-12 | 1913-06-09 |
| GRTR 0072A | ZWOLLE-UTRECHT | III | 1899-09-28 | 1914-07-31 |
| GRTR 0072A | ZWOLLE-UTRECHT | IV | 1919-12-09 | 19?? |
| GRTR 0072A | ZWOLLE-UTRECHT | V | 1901-06-01 | 1904-08-22 |
| GRTR 0072A | ZWOLLE-UTRECHT | VI | 1904-08-25 | 1910-08-27 |
| GRTR 0072A | ZWOLLE-UTRECHT | VII | 1900-09-24 | 19?? |
| GRTR 0072A | ZWOLLE-UTRECHT | VIII | 1903-06-02 | 1914-12-05 |
| GRTR 0072B | ZWOLLE-UTRECHT | A | 1902-07-24 | 1920-06-14 |
| GRTR 0072B | ZWOLLE-UTRECHT | B | 1899-10-30 | 1906-08-07 |
| GRTR 0072B | ZWOLLE-UTRECHT | C | 1905-07-11 | 1917-03-07 |
| GRTR 0072B | ZWOLLE-UTRECHT | D | 1899-08-21 | 1918-01-16 |
| GRTR 0072B | ZWOLLE-UTRECHT | E | 1901-01-07 | 1910-08-22 |
| GRTR 0072B | ZWOLLE-UTRECHT | E ^I | 1915-11-11 | 1917-07-25 |
| GRTR 0072B | ZWOLLE-UTRECHT | F | 1903-07-15 | 1909-04-13 |
| GRTR 0072B | ZWOLLE-UTRECHT | F ^I | 19?? | 19?? |
| GRTR 0072B | ZWOLLE-UTRECHT | G | 1899-01-10 | 1909-09-21 |
| GRTR 0073A | ZWOLLE-ZUTPHEN | I | 1901-07-07 | 1909-09-28 |
| GRTR 0073A | ZWOLLE-ZUTPHEN | II | 1897-12-17 | 1911-04-05 |
| GRTR 0073A | ZWOLLE-ZUTPHEN | III | 1899-09-21 | 1910-08-13 |
| GRTR 0073A | ZWOLLE-ZUTPHEN | IV | 1901-08-11 | 1906-08-28 |
| GRTR 0073A | ZWOLLE-ZUTPHEN | V | 1901-04-09 | 1906-03-15 |
| GRTR 0073A | ZWOLLE-ZUTPHEN | VI | 1906-08-25 | 1910-12-03 |
| GRTR 0073A | ZWOLLE-ZUTPHEN | VII | 1905-12-22 | 1907-08-13 |
| GRTR 0073B | ZWOLLE-ZUTPHEN | A | 1904-05-13 | 1907-07-19 |
| GRTR 0073B | ZWOLLE-ZUTPHEN | A ^I | 1900-01-10 | 1904-11-24 |
| GRTR 0073B | ZWOLLE-ZUTPHEN | B | 1906-05-14 | 19?? |
| GRTR 0073B | ZWOLLE-ZUTPHEN | C | 1897-09-07 | 1907-12-03 |
| GRTR 0073B | ZWOLLE-ZUTPHEN | D | 1903-10-01 | 19?? |
| GRTR 0073B | ZWOLLE-ZUTPHEN | E | 1905-02-09 | 1908-04-07 |
| GRTR 0073B | ZWOLLE-ZUTPHEN | F | 1900-08-18 | 1906-08-02 |

Grootrondstempels tramtrajecten

| Nr: | Traject: | Lr/nr: | VG: | LG: |
|------------|--------------------|----------------|------------|------------|
| GRTR 0101A | AMSTERDAM-EDAM | I | 1903-12-14 | 1918-01-24 |
| GRTR 0101A | AMSTERDAM-EDAM | II | 1911-00-00 | 1914-06-03 |
| GRTR 0101A | AMSTERDAM-EDAM | III | 1904-02-18 | 1917-10-22 |
| GRTR 0101A | AMSTERDAM-EDAM | IV | 1902-12-01 | 1905-11-20 |
| GRTR 0101B | AMSTERDAM-EDAM | A | 1904-06-01 | 1920-11-20 |
| GRTR 0101B | AMSTERDAM-EDAM | B | 1908-08-21 | 1927-07-22 |
| GRTR 0101B | AMSTERDAM-EDAM | C | 1907-02-18 | 1928-04-17 |
| GRTR 0101B | AMSTERDAM-EDAM | D | 1906-09-08 | 1918-02-23 |
| GRTR 0102A | ARNHEM-DRIEBERGEN | I | 1907-05-25 | 1908-09-12 |
| GRTR 0102A | ARNHEM-DRIEBERGEN | I ^A | 19?? | 19?? |
| GRTR 0102A | ARNHEM-DRIEBERGEN | II | 1912-05-28 | 19?? |
| GRTR 0102A | ARNHEM-DRIEBERGEN | III | 19?? | 19?? |
| GRTR 0102A | ARNHEM-DRIEBERGEN | IV | 1908-07-22 | 1912-06-19 |
| GRTR 0102A | ARNHEM-DRIEBERGEN | V | 1912-11-14 | 19?? |
| GRTR 0102B | ARNHEM-DRIEBERGEN | A | 1907-07-15 | 1921-05-26 |
| GRTR 0102B | ARNHEM-DRIEBERGEN | B | 1905-06-11 | 1912-11-18 |
| GRTR 0102B | ARNHEM-DRIEBERGEN | C | 1908-05-02 | 1912-10-08 |
| GRTR 0102B | ARNHEM-DRIEBERGEN | D | 1920-07-18 | 1921-06-01 |
| GRTR 0102B | ARNHEM-DRIEBERGEN | E | 1907-06-11 | 1909-09-17 |
| GRTR 0103A | ARNHEM-ZEIST | I | 1901-07-04 | 1903-06-17 |
| GRTR 0103A | ARNHEM-ZEIST | II | 19?? | 19?? |
| GRTR 0103A | ARNHEM-ZEIST | III | 19?? | 19?? |
| GRTR 0103A | ARNHEM-ZEIST | IV | 1898-01-04 | 1904-09-10 |
| GRTR 0103B | ARNHEM-ZEIST | A | 1904-05-13 | 19?? |
| GRTR 0103B | ARNHEM-ZEIST | B | 1898-11-19 | 1904-08-16 |
| GRTR 0103B | ARNHEM-ZEIST | C | 1898-03-02 | 1904-08-19 |
| GRTR 0103B | ARNHEM-ZEIST | D | 1900-04-07 | 19?? |
| GRTR 0104A | BRESKENS-MALDEGHEM | I | 1899-12-20 | 1911-07-18 |
| GRTR 0104A | BRESKENS-MALDEGHEM | II | 1899-07-01 | 1912-12-05 |
| GRTR 0104A | BRESKENS-MALDEGHEM | III | 1902-01-24 | 1909-12-31 |
| GRTR 0104A | BRESKENS-MALDEGHEM | IV | 1900-05-14 | 1906-09-07 |
| GRTR 0104A | BRESKENS-MALDEGHEM | V | 1900-06-24 | 19?? |
| GRTR 0104B | BRESKENS-MALDEGHEM | A | 1898-08-06 | 1913-07-25 |
| GRTR 0104B | BRESKENS-MALDEGHEM | B | 1900-08-13 | 1915-08-26 |
| GRTR 0104B | BRESKENS-MALDEGHEM | C | 1900-03-23 | 1910-12-05 |
| GRTR 0104B | BRESKENS-MALDEGHEM | D | 1906-04-20 | 1912-06-27 |
| GRTR 0105A | DIEREN-TERBORG | II | 1907-09-28 | 19?? |
| GRTR 0105A | DIEREN-TERBORG | III | 19?? | 19?? |
| GRTR 0105A | DIEREN-TERBORG | IV | 19?? | 19?? |
| GRTR 0105A | DIEREN-TERBORG | V | 19?? | 19?? |
| GRTR 0105B | DIEREN-TERBORG | A | 1910-09-19 | 1914-10-10 |
| GRTR 0105B | DIEREN-TERBORG | B | 1912-08-13 | 19?? |
| GRTR 0105B | DIEREN-TERBORG | C | 1907-12-26 | 1913-09-29 |
| GRTR 0105B | DIEREN-TERBORG | D | 1909-07-17 | 1919-09-18 |
| GRTR 0105B | DIEREN-TERBORG | E | 19?? | 19?? |
| GRTR 0106 | DRAGTEN-VEENWOUDEN | -- | 1903-01-00 | 1912-10-00 |
| GRTR 0107A | EINDHOVEN-REUSEL | I | 19?? | 19?? |
| GRTR 0107A | EINDHOVEN-REUSEL | II | 1902-03-24 | 1904-06-02 |
| GRTR 0107B | EINDHOVEN-REUSEL | A | 1901-11-02 | 1911-05-23 |
| GRTR 0107B | EINDHOVEN-REUSEL | B | 1898-01-08 | 1904-06-08 |
| GRTR 0108 | EINDHOVEN-REUZEL | A | 1900-03-01 | 19?? |



| | | | | |
|------------|---------------------------------|-----|------------|------------|
| GRTR 0109A | 'sGRAVENHAGE-'sGRAVENZANDE ('S) | I | 1897-09-28 | 1902-01-09 |
| GRTR 0109A | 'sGRAVENHAGE-'sGRAVENZANDE ('S) | II | 1908-12-14 | 19?? |
| GRTR 0109A | 'sGRAVENHAGE-'sGRAVENZANDE ('S) | III | 1910-02-24 | 19?? |
| GRTR 0109B | 'sGRAVENHAGE-'sGRAVENZANDE ('S) | A | 1897-11-27 | 1898-04-02 |
| GRTR 0109B | 'sGRAVENHAGE-'sGRAVENZANDE ('S) | B | 1900-03-03 | 19?? |
| GRTR 0109B | 'sGRAVENHAGE-'sGRAVENZANDE ('S) | C | 1911-10-05 | 19?? |



| | | | | |
|------------|---------------------------------|-----|------------|------------|
| GRTR 0109C | 'sGRAVENHAGE-'sGRAVENZANDE ('s) | I | 19?? | 19?? |
| GRTR 0109C | 'sGRAVENHAGE-'sGRAVENZANDE ('s) | II | 19?? | 19?? |
| GRTR 0109C | 'sGRAVENHAGE-'sGRAVENZANDE ('s) | III | 19?? | 19?? |
| GRTR 0109D | 'sGRAVENHAGE-'sGRAVENZANDE ('s) | A | 19?? | 19?? |
| GRTR 0109D | 'sGRAVENHAGE-'sGRAVENZANDE ('s) | B | 19?? | 19?? |
| GRTR 0109D | 'sGRAVENHAGE-'sGRAVENZANDE ('s) | C | 19?? | 19?? |
| GRTR 0110A | HARDENBERG-DEDEMSVAART | I | 1904-06-06 | 1906-08-09 |
| GRTR 0110A | HARDENBERG-DEDEMSVAART | II | 1903-10-27 | 1906-04-14 |
| GRTR 0110B | HARDENBERG-DEDEMSVAART | A | 1904-05-07 | 19?? |
| GRTR 0110B | HARDENBERG-DEDEMSVAART | B | 1903-08-04 | 1915-01-17 |
| GRTR 0111A | HEERENVEEN-DRACHTEN | I | 1899-06-12 | 1901-08-19 |
| GRTR 0111A | HEERENVEEN-DRACHTEN | II | 1900-08-09 | 1907-04-11 |
| GRTR 0111A | HEERENVEEN-DRACHTEN | III | 1926-02-02 | 19?? |
| GRTR 0111B | HEERENVEEN-DRACHTEN | A | 1900-10-18 | 1905-04-10 |
| GRTR 0111B | HEERENVEEN-DRACHTEN | B | 1900-07-25 | 1907-07-09 |
| GRTR 0111B | HEERENVEEN-DRACHTEN | C | 1903-07-19 | 1904-07-29 |
| GRTR 0112A | HEERENVEEN-DRAGTEN | I | 1904-08-01 | 1917-09-12 |
| GRTR 0112A | HEERENVEEN-DRAGTEN | II | 1902-07-07 | 1907-04-11 |
| GRTR 0112A | HEERENVEEN-DRAGTEN | III | 1904-08-15 | 1926-04-02 |
| GRTR 0112A | HEERENVEEN-DRAGTEN | IV | 19?? | 19?? |
| GRTR 0112B | HEERENVEEN-DRAGTEN | A | 1908-03-31 | 1915-06-20 |
| GRTR 0112B | HEERENVEEN-DRAGTEN | B | 1908-09-12 | 1917-09-11 |
| GRTR 0112B | HEERENVEEN-DRAGTEN | C | 1903-07-17 | 1925-08-11 |
| GRTR 0112B | HEERENVEEN-DRAGTEN | D | 19?? | 19?? |
| GRTR 0113A | HEERENVEEN-LEMMER | II | 1909-06-05 | 19?? |
| GRTR 0113A | HEERENVEEN-LEMMER | III | 1917-07-11 | 1921-02-07 |
| GRTR 0113A | HEERENVEEN-LEMMER | IV | 1918-02-22 | 1918-04-20 |
| GRTR 0113B | HEERENVEEN-LEMMER | B | 1915-06-30 | 1916-01-07 |
| GRTR 0114A | HOOGVEEN-N-AMSTERDAM | I | 1910-04-08 | 1927-10-25 |
| GRTR 0114A | HOOGVEEN-N-AMSTERDAM | II | 1908-11-02 | 1910-11-10 |
| GRTR 0114A | HOOGVEEN-N-AMSTERDAM | III | 1913-10-20 | 1928-12-24 |
| GRTR 0114A | HOOGVEEN-N-AMSTERDAM | IV | 19?? | 19?? |
| GRTR 0114A | HOOGVEEN-N-AMSTERDAM | V | 1920-06-22 | 19?? |
| GRTR 0114A | HOOGVEEN-N-AMSTERDAM | VI | 19?? | 19?? |

| | | | | |
|------------|---------------------------------------|-----|------------|------------|
| GRTR 0114B | HOOGEVEEN-N-AMSTERDAM | A | 1909-08-25 | 1912-04-12 |
| GRTR 0114B | HOOGEVEEN-N-AMSTERDAM | B | 1912-05-06 | 1928-12-04 |
| GRTR 0114B | HOOGEVEEN-N-AMSTERDAM | C | 19?? | 1927-01-16 |
| GRTR 0114B | HOOGEVEEN-N-AMSTERDAM | D | 1913-10-25 | 19?? |
| GRTR 0114B | HOOGEVEEN-N-AMSTERDAM | ☛ | 1908-10-29 | 1911-05-19 |
| GRTR 0115A | HULST-WALSOORDEN | I | 1910-06-11 | 1916-07-20 |
| GRTR 0115A | HULST-WALSOORDEN | II | 1903-12-31 | 1918-05-18 |
| GRTR 0115A | HULST-WALSOORDEN | III | 1916-05-20 | 1921-03-31 |
| GRTR 0115B | HULST-WALSOORDEN | A | 1910-05-27 | 1916-09-14 |
| GRTR 0115B | HULST-WALSOORDEN | B | 1904-09-09 | 1912-08-15 |
| GRTR 0115B | HULST-WALSOORDEN | C | 1905-09-22 | 19?? |
| GRTR 0116A | LEEUV:-S ^I JACOBI-PAROCHIE | I | 1910-05-07 | 1910-10-04 |
| GRTR 0116A | LEEUV:-S ^I JACOBI-PAROCHIE | II | 1906-04-24 | 1907-04-17 |
| GRTR 0116A | LEEUV:-S ^I JACOBI-PAROCHIE | III | 1907-03-02 | 1911-09-23 |
| GRTR 0116B | LEEUV:-S ^I JACOBI-PAROCHIE | A | 1905-04-25 | 1912-10-17 |
| GRTR 0116B | LEEUV:-S ^I JACOBI-PAROCHIE | B | 1905-11-17 | 1912-01-01 |
| GRTR 0117A | LEMMER-HEERENVEEN | I | 1906-04-09 | 1912-10-23 |
| GRTR 0117A | LEMMER-HEERENVEEN | II | 1902-05-26 | 1911-10-26 |
| GRTR 0117A | LEMMER-HEERENVEEN | III | 1912-04-30 | 19?? |
| GRTR 0117A | LEMMER-HEERENVEEN | IV | 1907-07-13 | 19?? |
| GRTR 0117A | LEMMER-HEERENVEEN | V | 1904-09-03 | 1905-07-27 |
| GRTR 0117B | LEMMER-HEERENVEEN | A | 1907-04-03 | 19?? |
| GRTR 0117B | LEMMER-HEERENVEEN | B | 19?? | 19?? |
| GRTR 0117B | LEMMER-HEERENVEEN | C | 19?? | 19?? |
| GRTR 0117B | LEMMER-HEERENVEEN | D | 1907-05-12 | 1909-07-03 |
| GRTR 0117B | LEMMER-HEERENVEEN | E | 1905-05-01 | 19?? |
| GRTR 0118A | LUTTEN-DEDEMSV:STATION | I | 1907-05-13 | 1912-07-01 |
| GRTR 0118A | LUTTEN-DEDEMSV:STATION | II | 1906-09-07 | 1912-02-02 |
| GRTR 0118A | LUTTEN-DEDEMSV:STATION | III | 1909-03-27 | 19?? |
| GRTR 0118B | LUTTEN-DEDEMSV:STATION | A | 1912-07-30 | 19?? |
| GRTR 0118B | LUTTEN-DEDEMSV:STATION | B | 1907-06-08 | 1912-03-02 |
| GRTR 0118B | LUTTEN-DEDEMSV:STATION | C | 19?? | 19?? |
| GRTR 0119A | MIDDELBURG-DOMBURG | I | 1908-08-04 | 19?? |
| GRTR 0119A | MIDDELBURG-DOMBURG | II | 1906-12-22 | 1920-08-07 |
| GRTR 0119A | MIDDELBURG-DOMBURG | III | 1907-11-27 | 1916-06-15 |
| GRTR 0119B | MIDDELBURG-DOMBURG | A | 1908-10-05 | 1921-05-21 |
| GRTR 0119B | MIDDELBURG-DOMBURG | B | 1906-07-05 | 1918-03-16 |
| GRTR 0119B | MIDDELBURG-DOMBURG | C | 1906-10-16 | 1915-11-27 |
| GRTR 0120A | NIJMEGEN-WAMEL | I | 19?? | 19?? |
| GRTR 0120A | NIJMEGEN-WAMEL | II | 1903-08-19 | 1921-05-07 |
| GRTR 0120A | NIJMEGEN-WAMEL | IV | 1905-08-03 | 19?? |
| GRTR 0120B | NIJMEGEN-WAMEL | A | 1906-11-30 | 19?? |
| GRTR 0120B | NIJMEGEN-WAMEL | B | 19?? | 19?? |
| GRTR 0121A | ROTTERDAM-BROUWERSHAVEN | V | 1900-10-31 | 19?? |
| GRTR 0121B | ROTTERDAM-BROUWERSHAVEN | A | 19?? | 19?? |
| GRTR 0121B | ROTTERDAM-BROUWERSHAVEN | B | 19?? | 19?? |
| GRTR 0122A | ROTTERDAM-HELLEVOETSLUIS | I | 1907-06-24 | 1912-07-12 |
| GRTR 0122A | ROTTERDAM-HELLEVOETSLUIS | II | 1908-08-19 | 1911-01-18 |
| GRTR 0122A | ROTTERDAM-HELLEVOETSLUIS | III | 1910-08-31 | 1912-03-11 |
| GRTR 0122A | ROTTERDAM-HELLEVOETSLUIS | IV | 1909-10-02 | 1911-01-25 |
| GRTR 0122B | ROTTERDAM-HELLEVOETSLUIS | A | 1909-06-25 | 1912-09-07 |
| GRTR 0122B | ROTTERDAM-HELLEVOETSLUIS | B | 1907-02-13 | 1911-05-12 |
| GRTR 0122B | ROTTERDAM-HELLEVOETSLUIS | C | 1907-07-17 | 19?? |

GRTR 0122B ROTTERDAM-HELLEVOETSLUIS D 19?? 19??



| | | | | |
|------------|---------------------------|-----|------------|------------|
| GRTR 0123A | ROTTERDAM-ZUID-BEIJERLAND | I | 1909-08-02 | 1912-07-15 |
| GRTR 0123A | ROTTERDAM-ZUID-BEIJERLAND | II | 1902-06-13 | 1910-11-04 |
| GRTR 0123A | ROTTERDAM-ZUID-BEIJERLAND | III | 1910-04-19 | 1911-08-16 |
| GRTR 0123A | ROTTERDAM-ZUID-BEIJERLAND | IV | 19?? | 19?? |
| GRTR 0123B | ROTTERDAM-ZUID-BEIJERLAND | A | 1905-07-10 | 1905-08-06 |
| GRTR 0123B | ROTTERDAM-ZUID-BEIJERLAND | B | 1905-11-04 | 1911-11-02 |
| GRTR 0123B | ROTTERDAM-ZUID-BEIJERLAND | C | 1905-06-17 | 19?? |



| | | | | |
|------------|--------------------------|------|------------|------------|
| GRTR 0124A | ROTTERDAM-Z:BEIJERLAND 1 | I | 1908-07-30 | 19?? |
| GRTR 0124A | ROTTERDAM-Z:BEIJERLAND 1 | II | 1907-08-28 | 1907-12-30 |
| GRTR 0124B | ROTTERDAM-Z:BEIJERLAND 1 | A | 19?? | 19?? |
| GRTR 0124B | ROTTERDAM-Z:BEIJERLAND 1 | B | 1907-06-12 | 19?? |
| GRTR 0124B | ROTTERDAM-Z:BEIJERLAND 1 | C | 1908-05-18 | 19?? |
| GRTR 0124C | ROTTERDAM-Z:BEIJERLAND 1 | 7-8V | 1899-03-18 | 19?? |



| | | | | |
|------------|---------------------------|-----|------------|------------|
| GRTR 0125A | ROTTERDAM-Z:BEIJERLAND 2 | I | 1911-11-06 | 1913-12-27 |
| GRTR 0125A | ROTTERDAM-Z:BEIJERLAND 2 | II | 19?? | 19?? |
| GRTR 0125A | ROTTERDAM-Z:BEIJERLAND 2 | III | 1911-08-16 | 1913-11-08 |
| GRTR 0125B | ROTTERDAM-Z:BEIJERLAND 2 | A | 1913-03-18 | 19?? |
| GRTR 0125B | ROTTERDAM-Z:BEIJERLAND 2 | B | 1910-11-30 | 1913-04-24 |
| GRTR 0126 | SANDENB.LAAN-Z.DRIEBERGEN | E | 1903-05-00 | 1904-06-24 |
| GRTR 0127A | SCHAGEN-WOGNUM | I | 1903-04-04 | 1911-11-29 |
| GRTR 0127A | SCHAGEN-WOGNUM | II | 1906-04-05 | 1914-09-22 |
| GRTR 0127B | SCHAGEN-WOGNUM | A | 1911-01-24 | 19?? |
| GRTR 0127B | SCHAGEN-WOGNUM | B | 1903-10-10 | 1911-01-16 |
| GRTR 0128A | SNEEK-HARLINGEN | I | 1899-10-28 | 1911-10-20 |
| GRTR 0128A | SNEEK-HARLINGEN | II | 1916-08-17 | 1917-03-19 |
| GRTR 0128A | SNEEK-HARLINGEN | III | 1900-07-04 | 1904-05-31 |
| GRTR 0128B | SNEEK-HARLINGEN | A | 1903-04-02 | 1909-11-15 |
| GRTR 0128B | SNEEK-HARLINGEN | B | 1907-09-30 | 1913-03-31 |
| GRTR 0128B | SNEEK-HARLINGEN | C | 1903-07-06 | 19?? |
| GRTR 0129A | SNEEK-HEERENVEEN | I | 19?? | 19?? |
| GRTR 0129A | SNEEK-HEERENVEEN | II | 1904-01-08 | 19?? |
| GRTR 0129A | SNEEK-HEERENVEEN | III | 1899-08-05 | 19?? |
| GRTR 0129B | SNEEK-HEERENVEEN | A | 19?? | 19?? |

| | | | | |
|------------|---------------------------|-----|---------------|------------|
| GRTR 0129B | SNEEK-HEERENVEEN | B | 19?? | 19?? |
| GRTR 0129B | SNEEK-HEERENVEEN | C | 1903-02-09 | 19?? |
| GRTR 0130A | STEENBERGEN-BROUWERSHAVEN | I | 1906-09-01 | 1908-12-15 |
| GRTR 0130A | STEENBERGEN-BROUWERSHAVEN | II | 1904-02-01 | 1914-07-02 |
| GRTR 0130A | STEENBERGEN-BROUWERSHAVEN | III | 1908-09-29 | 1913-03-28 |
| GRTR 0130A | STEENBERGEN-BROUWERSHAVEN | IV | 1903-08-09 | 1909-07-01 |
| GRTR 0130B | STEENBERGEN-BROUWERSHAVEN | A | 1902-01-13 | 1912-12-28 |
| GRTR 0130B | STEENBERGEN-BROUWERSHAVEN | B | 1909-01-22 | 1914-07-23 |
| GRTR 0130B | STEENBERGEN-BROUWERSHAVEN | C | 1910-02-28 | 1915-03-17 |
| GRTR 0131A | WINSUM-ULRUM | I | 1909-09-28 *) | 1911-12-02 |
| GRTR 0131A | WINSUM-ULRUM | II | 1912-02-28 | 19?? |
| GRTR 0131B | WINSUM-ULRUM | A | 1905-02-27 | 1911-03-09 |
| GRTR 0131B | WINSUM-ULRUM | B | 1903-08-17 | 1907-12-16 |



| | | | | |
|------------|-------------------------------|-----|------------|------------|
| GRTR 0132A | WIJK BIJ D:STEDE-SANDENB:LAAN | I | 1899-04-06 | 1910-08-15 |
| GRTR 0132A | WIJK BIJ D:STEDE-SANDENB:LAAN | II | 1909-10-09 | 1911-12-14 |
| GRTR 0132A | WIJK BIJ D:STEDE-SANDENB:LAAN | III | 1901-08-03 | 1911-01-03 |
| GRTR 0132B | WIJK BIJ D:STEDE-SANDENB:LAAN | A | 1910-02-12 | 1916-02-05 |
| GRTR 0132B | WIJK BIJ D:STEDE-SANDENB:LAAN | B | 1898-08-30 | 19?? |
| GRTR 0132B | WIJK BIJ D:STEDE-SANDENB:LAAN | D | 1901-05-29 | 19?? |
| GRTR 0132B | WIJK BIJ D:STEDE-SANDENB:LAAN | E | 1899-11-21 | 1909-12-20 |
| GRTR 0132B | WIJK BIJ D:STEDE-SANDENB:LAAN | F | 19?? | 19?? |
| GRTR 0133A | WINSCHOTEN-STADSKANAAL | I | 1906-02-10 | 1916-04-14 |
| GRTR 0133A | WINSCHOTEN-STADSKANAAL | II | 1914-07-11 | 1915-07-15 |
| GRTR 0133A | WINSCHOTEN-STADSKANAAL | III | 1906-03-14 | 1914-08-01 |
| GRTR 0133A | WINSCHOTEN-STADSKANAAL | IV | 1907-01-10 | 1916-02-28 |
| GRTR 0133B | WINSCHOTEN-STADSKANAAL | A | 1913-03-21 | 1913-12-06 |
| GRTR 0133B | WINSCHOTEN-STADSKANAAL | B | 1906-05-25 | 1912-12-28 |
| GRTR 0133B | WINSCHOTEN-STADSKANAAL | C | 1905-09-14 | 1913-12-17 |
| GRTR 0133B | WINSCHOTEN-STADSKANAAL | D | 1907-01-05 | 1913-11-26 |
| GRTR 0134A | ZUIDBROEK-TER APEL | I | 1899-04-26 | 1910-08-10 |
| GRTR 0134A | ZUIDBROEK-TER APEL | II | 1901-07-03 | 1910-08-10 |
| GRTR 0134A | ZUIDBROEK-TER APEL | III | 1904-03-03 | 1907-03-24 |
| GRTR 0134A | ZUIDBROEK-TER APEL | IV | 1902-07-04 | 1909-03-24 |
| GRTR 0134B | ZUIDBROEK-TER APEL | A | 1901-12-23 | 1910-06-10 |
| GRTR 0134B | ZUIDBROEK-TER APEL | B | 1902-06-17 | 1908-01-29 |
| GRTR 0134B | ZUIDBROEK-TER APEL | C | 1898-12-01 | 1904-10-26 |
| GRTR 0134B | ZUIDBROEK-TER APEL | D | 1899-06-15 | 1909-10-26 |
| GRTR 0134B | ZUIDBROEK-TER APEL | E | 1899-05-26 | 1910-12-10 |
| GRTR 0134B | ZUIDBROEK-TER APEL | ☛ | 1899-05-13 | 19?? |

Grootrondstempels boottrajecten

| Nr: | Traject: | Lr/nr: | VG: | LG: |
|------------|-----------------------------|--------|------------|-------------|
| GRTR 0201A | ENKHUIZEN-STAVOREN | I | 1906-09-11 | 1917-04-18 |
| GRTR 0201A | ENKHUIZEN-STAVOREN | II | 1906-09-12 | 1909-09-03 |
| GRTR 0201A | ENKHUIZEN-STAVOREN | III | 1905-04-05 | 1917-08-13 |
| GRTR 0201A | ENKHUIZEN-STAVOREN | IV | 1911-01-23 | 1916-09-02 |
| GRTR 0201B | ENKHUIZEN-STAVOREN | A | 1905-06-11 | 1916-07-29 |
| GRTR 0201B | ENKHUIZEN-STAVOREN | B | 1905-06-06 | 1917-04-23 |
| GRTR 0201B | ENKHUIZEN-STAVOREN | C | 1910-09-16 | 19?? |
| GRTR 0201B | ENKHUIZEN-STAVOREN | D | 1909-06-12 | 19?? |
| GRTR 0202 | QUEENBOROUGH-VLISSINGEN | ✘ | 1908-11-00 | 1909-02-003 |
| GRTR 0203A | VLAARDINGEN-BRIELLE | I | 19?? | 19?? |
| GRTR 0203A | VLAARDINGEN-BRIELLE | II | 19?? | 19?? |
| GRTR 0203A | VLAARDINGEN-BRIELLE | III | 19?? | 19?? |
| GRTR 0203B | VLAARDINGEN-BRIELLE | A | 1915-03-18 | 19?? |
| GRTR 0203B | VLAARDINGEN-BRIELLE | B | 19?? | 19?? |
| GRTR 0203B | VLAARDINGEN-BRIELLE | C | 1910-03-16 | 1916-09-26 |
| GRTR 0204A | VLAARDINGEN-HELLEV:SLUIS | II | 19?? | 19?? |
| GRTR 0204A | VLAARDINGEN-HELLEV:SLUIS | III | 19?? | 19?? |
| GRTR 0204B | VLAARDINGEN-HELLEV:SLUIS | A | 1898-04-03 | 1903-09-14 |
| GRTR 0204B | VLAARDINGEN-HELLEV:SLUIS | B | 1901-11-19 | 1912-09-04 |
| GRTR 0204B | VLAARDINGEN-HELLEV:SLUIS | C | 1903-07-24 | 1907-04-16 |
| GRTR 0205 | VLISSINGEN-QUEENBOROUGH | ✘ | 1908-08-00 | 1908-12-00 |
| GRTR 0206 | POSTAGENT AMSTERDAM-BATAVIA | ✘ | 1904-05-08 | 1913-04-29 |
| GRTR 0207 | POSTAGENT BATAVIA-AMSTERDAM | ✘ | 1906-06-02 | 1912-11-22 |
| GRTR 0208 | POSTAGENT BATAVIA-ROTTERDAM | ✘ | 1907-03-28 | 1928-04-11 |
| GRTR 0209 | POSTAGENT ROTTERDAM-BATAVIA | ✘ | 1905-07-12 | 1927-10-13 |

Grootrondstempels nachtuur karakters

Op het traject Amsterdam-Rotterdam werd met ingang van 1 april 1905 een nachtposttrein ingezet. Dit werd bevestigd in dienstorder 146 van 18 april 1905.

Nachtuur karakters werden gebruikt in de grootrondstempels van postkantoren die correspondentie meegaven aan of ontvingen van de nachttreinen op het traject Amsterdam-Rotterdam-Dordrecht v.v.

| Nr: | Traject: | Tijdsaanduiding: | VG: | LG: |
|------------|--------------|------------------|------------|------------|
| GRNU 0001A | AMSTERDAM | 12-2V (vertrek) | 1906-03-11 | 1909-02-02 |
| GRNU 0001B | AMSTERDAM | 12-2V (aankomst) | 1906-01-31 | 1907-12-17 |
| GRNU 0002A | AMSTERDAM | 2-6V (vertrek) | 1906-05-02 | 1908-01-24 |
| GRNU 0002B | AMSTERDAM | 2-6V (aankomst) | 1905-09-09 | 1910-12-02 |
| GRNU 0003A | DELFT | 12-2V (vertrek) | 19?? | 19?? |
| GRNU 0003B | DELFT | 12-2V (aankomst) | 1906-01-14 | 19?? |
| GRNU 0004A | DELFT | 2-6V (vertrek) | 1905-11-13 | 1907-03-11 |
| GRNU 0004B | DELFT | 2-6V (aankomst) | 1905-11-13 | 1907-02-10 |
| GRNU 0005A | DORDRECHT | 12-2V (vertrek) | 19?? | 19?? |
| GRNU 0005B | DORDRECHT | 12-2V (aankomst) | 19?? | 19?? |
| GRNU 0006A | DORDRECHT | 2-6V (vertrek) | 1905-12-09 | 1906-08-06 |
| GRNU 0006B | DORDRECHT | 2-6V (aankomst) | 1905-12-14 | 1906-08-14 |
| GRNU 0007A | 'sGRAVENHAGE | 12-2V (vertrek) | 1906-01-19 | 1906-11-17 |
| GRNU 0007B | 'sGRAVENHAGE | 12-2V (aankomst) | 1906-01-20 | 1907-04-19 |
| GRNU 0008A | 'sGRAVENHAGE | 2-6V (vertrek) | 1905-12-25 | 1906-12-05 |
| GRNU 0008B | 'sGRAVENHAGE | 2-6V (aankomst) | 1905-11-06 | 1907-01-01 |
| GRNU 0009A | HAARLEM | 12-2V (vertrek) | 19?? | 19?? |
| GRNU 0009B | HAARLEM | 12-2V (aankomst) | 19?? | 19?? |
| GRNU 0010A | HAARLEM | 2-6V (vertrek) | 19?? | 19?? |
| GRNU 0010B | HAARLEM | 2-6V (aankomst) | 1905-05-02 | 19?? |
| GRNU 0011A | HILLEGOM | 12-2V (vertrek) | 19?? | 19?? |
| GRNU 0011B | HILLEGOM | 12-2V (aankomst) | 19?? | 19?? |
| GRNU 0012A | HILLEGOM | 2-6V (vertrek) | 19?? | 19?? |
| GRNU 0012B | HILLEGOM | 2-6V (aankomst) | 1906-01-04 | 1907-01-09 |
| GRNU 0013A | LEIDEN | 12-2V (vertrek) | 1905-12-23 | 19?? |
| GRNU 0013B | LEIDEN | 12-2V (aankomst) | 1906-06-28 | 19?? |
| GRNU 0014A | LEIDEN | 2-6V (vertrek) | 1905-12-07 | 19?? |
| GRNU 0014B | LEIDEN | 2-6V (aankomst) | 1905-11-15 | 1906-11-04 |
| GRNU 0015A | LISSE | 12-2V (vertrek) | 1906-03-22 | 19?? |
| GRNU 0015B | LISSE | 12-2V (aankomst) | 1906-02-20 | 19?? |
| GRNU 0016A | LISSE | 2-6V (vertrek) | 1906-05-02 | 1910-10-16 |
| GRNU 0016B | LISSE | 2-6V (aankomst) | 1906-02-11 | 1908-09-14 |
| GRNU 0017A | ROTTERDAM | 12-2V (vertrek) | 1905-12-03 | 1907-03-03 |
| GRNU 0017B | ROTTERDAM | 12-2V (aankomst) | 1906-02-21 | 1906-12-24 |
| GRNU 0018A | ROTTERDAM | 2-6V (vertrek) | 19?? | 19?? |
| GRNU 0018B | ROTTERDAM | 2-6V (aankomst) | 1905-10-21 | 1907-05-16 |
| GRNU 0019A | SCHIEDAM | 12-2V (vertrek) | 19?? | 19?? |
| GRNU 0019B | SCHIEDAM | 12-2V (aankomst) | 1906-02-15 | 1906-08-02 |
| GRNU 0020A | SCHIEDAM | 2-6V (vertrek) | 1906-01-15 | 1906-03-05 |
| GRNU 0020B | SCHIEDAM | 2-6V (aankomst) | 1905-11-21 | 1906-09-27 |

Grootrond nachtuur karakters gebruikt buiten officiële periode nachttreinen

MEPPEL

2-6V

14 oktober 1900 (zondag)



Het poststuk is waarschijnlijk meegegeven met de laatste trein van Meppel naar Leeuwarden en te Assen ontvangen op 14 oktober 1900 tussen 06.00 uur en 07.00 uur in de ochtend. De uur aanduidingen 2-6V van MEPPEL en 6-2V van ASSEN sluiten op elkaar aan.

SASSENHEIM

2-6V

25 december 1912 (woensdag)



Vermeld in veilingcatalogus 'Van Dieten' veiling 640 bladzijde 54 kavelnummer 798

De *cursief* vermelde data geven de datum van verstrekking aan.

Langebalkstempels trajectstempels

| Nr: | Traject: | Lr/nr: | VG: | LG: |
|-----------|-------------------------|--------|------------|------|
| LBTR 0001 | DIEREN / TERBORG (tram) | - | 1908-03-22 | 19?? |
| LBTR 0002 | TERBORG / DIEREN (tram) | A | 1908-03-22 | 19?? |

Langebalkstempel Spoorwegpostkantoor № 1 Amsterdam

| Nr: | Benaming: | VG: | LG: |
|-----------|------------------------------|------------|------|
| LBSP 0001 | AMSTERDAM / 's HERTOGENBOSCH | 1908-03-22 | 19?? |

Kortebalk trajectstempels

| Nr: | Traject: | Lr/nr: | VG: | LG: |
|------------|---------------------------------------|----------------|------------|------------|
| KBTR 0001 | AMSTERDAM-ANTWERPEN | II | 1908-11-15 | 1915-08-16 |
| KBTR 0001 | AMSTERDAM-ANTWERPEN | IV | 1908-11-15 | 1918-01-11 |
| KBTR 0001 | AMSTERDAM-ANTWERPEN | V | 1908-11-15 | 1914-07-11 |
| KBTR 0001 | AMSTERDAM-ANTWERPEN | VI | 1908-11-15 | 1918-01-11 |
| KBTR 0001 | AMSTERDAM-ANTWERPEN | VIII | 1908-11-15 | 1910-10-01 |
| KBTR 0001 | AMSTERDAM-ANTWERPEN | X | 1908-11-15 | 1916-07-28 |
| KBTR 0002 | AMSTERDAM-EMMERIK | I | 1908-11-15 | 1914-04-06 |
| KBTR 0002 | AMSTERDAM-EMMERIK | II | 1908-11-15 | 1909-04-17 |
| KBTR 0002 | AMSTERDAM-EMMERIK | III | 1908-11-15 | 19?? |
| KBTR 0002 | AMSTERDAM-EMMERIK | VIII | 1908-11-15 | 1913-03-31 |
| KBTR 0002 | AMSTERDAM-EMMERIK | IX | 1908-11-15 | 1913-07-23 |
| KBTR 0002 | AMSTERDAM-EMMERIK | X ^A | 1908-11-15 | 1910-05-19 |
| KBTR 0003 | AMSTERDAM-RHEINE | VIII | 1908-09-29 | 1911-01-23 |
| KBTR 0004 | ANTWERPEN-AMSTERDAM | B | 1908-11-15 | 19?? |
| KBTR 0004 | ANTWERPEN-AMSTERDAM | C | 1908-11-15 | 1915-06-24 |
| KBTR 0004 | ANTWERPEN-AMSTERDAM | C ^l | 1908-11-15 | 1910-08-13 |
| KBTR 0004 | ANTWERPEN-AMSTERDAM | E | 1908-11-15 | 1912-05-07 |
| KBTR 0004 | ANTWERPEN-AMSTERDAM | J | 1908-11-15 | 19?? |
| KBTR 0004 | ANTWERPEN-AMSTERDAM | G | 1908-11-15 | 1910-08-22 |
| KBTR 0005 | ARNHEM-BOXTTEL | E | 1909-10-30 | 1910-03-23 |
| KBTR 0005 | ARNHEM-BOXTTEL | H | 1909-10-30 | 19?? |
| KBTR 0005 | ARNHEM-BOXTTEL | L | 1909-10-30 | 1910-07-25 |
| KBTR 0006A | ARNHEM-BREDA (Arabische maandcijfers) | A | 1908-11-15 | 1911-12-03 |
| KBTR 0006A | ARNHEM-BREDA (Arabische maandcijfers) | C | 1908-11-15 | 1909-02-24 |
| KBTR 0006A | ARNHEM-BREDA (Arabische maandcijfers) | D | 1908-11-15 | 19?? |
| KBTR 0006A | ARNHEM-BREDA (Arabische maandcijfers) | E | 1908-11-15 | 1910-08-07 |
| KBTR 0006A | ARNHEM-BREDA (Arabische maandcijfers) | F | 1908-11-15 | 19?? |
| KBTR 0006A | ARNHEM-BREDA (Arabische maandcijfers) | G | 1908-11-15 | 1909-12-13 |
| KBTR 0006A | ARNHEM-BREDA (Arabische maandcijfers) | H | 1908-11-15 | 19?? |
| KBTR 0006A | ARNHEM-BREDA (Arabische maandcijfers) | J | 1908-11-15 | 19?? |
| KBTR 0006A | ARNHEM-BREDA (Arabische maandcijfers) | K | 1908-11-15 | 19?? |
| KBTR 0006A | ARNHEM-BREDA (Arabische maandcijfers) | L | 1908-11-15 | 19?? |
| KBTR 0006B | ARNHEM-BREDA (Romeinse maandcijfers) | A | 1909-10-30 | 1912-07-11 |
| KBTR 0007 | ARNHEM-OLDENZAAL | I | 1909-10-30 | 1914-07-04 |
| KBTR 0007 | ARNHEM-OLDENZAAL | III | 1909-10-30 | 19?? |
| KBTR 0007 | ARNHEM-OLDENZAAL | IV | 1909-10-30 | 1911-06-16 |
| KBTR 0007 | ARNHEM-OLDENZAAL | VII | 1909-10-30 | 1910-03-29 |
| KBTR 0007 | ARNHEM-OLDENZAAL | VIII | 1909-10-30 | 19?? |
| KBTR 0007 | ARNHEM-OLDENZAAL | IX | 1909-10-30 | 19?? |
| KBTR 0007 | ARNHEM-OLDENZAAL | X | 1910-04-27 | 19?? |

| | | | | |
|------------|---------------------------------------|----------------|------------|------------|
| KBTR 0008 | BOXTEL-ARNHEM | - | 1909-10-30 | 19?? |
| KBTR 0009 | BOXTEL-GOCH | II | 1910-02-15 | 1911-06-30 |
| KBTR 0009 | BOXTEL-GOCH | III | 1910-02-15 | 1911-08-31 |
| KBTR 0010A | BREDA-ARNHEM (Arabische maandcijfers) | I | 1908-11-15 | 1911-09-22 |
| KBTR 0010A | BREDA-ARNHEM (Arabische maandcijfers) | II | 1908-11-15 | 1910-09-21 |
| KBTR 0010A | BREDA-ARNHEM (Arabische maandcijfers) | IV | 1908-11-15 | 1912-01-06 |
| KBTR 0010A | BREDA-ARNHEM (Arabische maandcijfers) | V | 1908-11-15 | 1912-08-10 |
| KBTR 0010A | BREDA-ARNHEM (Arabische maandcijfers) | VI | 1908-11-15 | 19?? |
| KBTR 0010A | BREDA-ARNHEM (Arabische maandcijfers) | IX | 1908-11-15 | 1909-08-28 |
| KBTR 0010A | BREDA-ARNHEM (Arabische maandcijfers) | X | 1908-11-15 | 1911-09-20 |
| KBTR 0010B | BREDA-ARNHEM (Romeinse maandcijfers) | I | 1909-10-30 | 1917-02-26 |
| KBTR 0010B | BREDA-ARNHEM (Romeinse maandcijfers) | IV | 1909-10-30 | 1913-09-21 |
| KBTR 0010B | BREDA-ARNHEM (Romeinse maandcijfers) | VI | 1909-10-30 | 1912-01-16 |
| KBTR 0011 | BREDA-VLISSINGEN | A | 1910-02-15 | 1921-11-04 |
| KBTR 0011 | BREDA-VLISSINGEN | B | 1910-02-15 | 19?? |
| KBTR 0011 | BREDA-VLISSINGEN | C | 1910-02-15 | 1910-04-19 |
| KBTR 0011 | BREDA-VLISSINGEN | D | 1910-02-15 | 1912-02-07 |
| KBTR 0011 | BREDA-VLISSINGEN | F | 1910-02-15 | 1915-07-07 |
| KBTR 0011 | BREDA-VLISSINGEN | H | 1910-02-15 | 19?? |
| KBTR 0012 | DIEREN-TERBORG (tram) | I | 1910-01-06 | 19?? |
| KBTR 0012 | DIEREN-TERBORG (tram) | III | 1910-01-06 | 19?? |
| KBTR 0013 | DRAGTEN-HEERENVEEN (tram) | A | 1909-12-04 | 1927-05-11 |
| KBTR 0013 | DRAGTEN-HEERENVEEN (tram) | B | 1909-12-04 | 1915-10-07 |
| KBTR 0014 | EMMERIK-AMSTERDAM | B | 1908-11-15 | 1910-01-07 |
| KBTR 0014 | EMMERIK-AMSTERDAM | C | 1908-11-15 | 1911-01-08 |
| KBTR 0014 | EMMERIK-AMSTERDAM | D | 1908-11-15 | 19?? |
| KBTR 0014 | EMMERIK-AMSTERDAM | E [!] | 1908-11-15 | 1913-01-28 |
| KBTR 0014 | EMMERIK-AMSTERDAM | F | 1908-11-15 | 1912-05-29 |
| KBTR 0014 | EMMERIK-AMSTERDAM | G | 1908-11-15 | 1914-09-21 |
| KBTR 0014 | EMMERIK-AMSTERDAM | J | 1908-11-15 | 19?? |
| KBTR 0014 | EMMERIK-AMSTERDAM | K | 1908-11-15 | 1912-08-01 |
| KBTR 0014 | EMMERIK-AMSTERDAM | L | 1908-11-15 | 1915-09-18 |
| KBTR 0015 | GOCH-BOXTEL | A | 1910-02-15 | 1912-01-15 |
| KBTR 0015 | GOCH-BOXTEL | B | 1910-02-15 | 1912-01-06 |
| KBTR 0015 | GOCH-BOXTEL | C | 1910-02-15 | 1910-06-13 |
| KBTR 0016 | GRONINGEN-ROODESCHOOL | A | 1908-07-15 | 19?? |
| KBTR 0017 | HARLINGEN-NIEUWENSCHANS | A | 1909-10-09 | 1913-11-01 |
| KBTR 0017 | HARLINGEN-NIEUWENSCHANS | B | 1909-10-09 | 1912-01-06 |
| KBTR 0017 | HARLINGEN-NIEUWENSCHANS | C | 1909-10-09 | 19?? |
| KBTR 0018 | HARLINGEN-STIENS | A | 1909-10-09 | 19?? |
| KBTR 0019 | HEERENVEEN-DRAGTEN (tram) | I | 1909-12-04 | 1912-08-19 |
| KBTR 0019 | HEERENVEEN-DRAGTEN (tram) | II | 1909-12-04 | 1927-05-11 |
| KBTR 0019 | HEERENVEEN-DRAGTEN (tram) | VIII | 1909-12-04 | 19?? |
| KBTR 0020 | HELLEVOETSLUIS-ROTTERDAM (tram) | III | 1909-12-04 | 1924-07-28 |
| KBTR 0020 | HELLEVOETSLUIS-ROTTERDAM (tram) | IV | 1909-12-04 | 1922-05-17 |
| KBTR 0021 | HENGELO-RUURLO | A | 1909-10-30 | 1920-04-17 |
| KBTR 0021 | HENGELO-RUURLO | B | 1909-10-30 | 19?? |
| KBTR 0022 | HULST-WALSOORDEN (tram) | 1 | 1921-05-20 | 1928-10-19 |
| KBTR 0023 | JOURE-SNEEK (tram) | A | 1910-01-06 | 19?? |
| KBTR 0024 | LEEWARDEN-MEPPPEL | C | 1909-12-04 | 1913-03-31 |
| KBTR 0024 | LEEWARDEN-MEPPPEL | H | 1909-12-04 | 1914-07-28 |
| KBTR 0025 | MEPPPEL-LEEWARDEN | I | 1909-12-04 | 1912-01-23 |
| KBTR 0025 | MEPPPEL-LEEWARDEN | VI | 1909-12-04 | 1914-01-05 |

| | | | | |
|-----------|-----------------------------------|------|------------|------------|
| KBTR 0026 | MIDDELHARNIS-OOLTGENSPLAAT (tram) | A | 1909-05-02 | 19?? |
| KBTR 0026 | MIDDELHARNIS-OOLTGENSPLAAT (tram) | B | 1909-05-02 | 1913-07-07 |
| KBTR 0026 | MIDDELHARNIS-OOLTGENSPLAAT (tram) | C | 1909-05-02 | 19?? |
| KBTR 0026 | MIDDELHARNIS-OOLTGENSPLAAT (tram) | D | 1909-05-02 | 1916-09-18 |
| KBTR 0027 | MIDDELHARNIS-OUDDORP (tram) | A | 1909-05-02 | 19?? |
| KBTR 0027 | MIDDELHARNIS-OUDDORP (tram) | B | 1909-05-02 | 19?? |
| KBTR 0027 | MIDDELHARNIS-OUDDORP (tram) | C | 1909-05-02 | 19?? |
| KBTR 0027 | MIDDELHARNIS-OUDDORP (tram) | D | 1909-05-02 | 19?? |
| KBTR 0028 | NIEUWENSCHANS-HARLINGEN | II | 1909-10-09 | 1916-03-13 |
| KBTR 0028 | NIEUWENSCHANS-HARLINGEN | IV | 1909-10-09 | 1924-12-11 |
| KBTR 0028 | NIEUWENSCHANS-HARLINGEN | V | 1909-10-09 | 1912-12-06 |
| KRTR 0029 | OLDENZAAL-ARNHEM | A | 1909-10-30 | 1910-07-18 |
| KRTR 0029 | OLDENZAAL-ARNHEM | E | 1909-10-30 | 1914-07-23 |
| KRTR 0029 | OLDENZAAL-ARNHEM | F | 1909-10-30 | 1911-09-16 |
| KRTR 0029 | OLDENZAAL-ARNHEM | G | 1909-10-30 | 1910-06-24 |
| KRTR 0029 | OLDENZAAL-ARNHEM | J | 1909-10-30 | 1910-03-29 |
| KRTR 0029 | OLDENZAAL-ARNHEM | L | 1909-10-30 | 19?? |
| KBTR 0030 | OOLTGENSPLAAT-MIDDELHARNIS (tram) | I | 1909-05-02 | 1928-10-12 |
| KBTR 0030 | OOLTGENSPLAAT-MIDDELHARNIS (tram) | II | 1909-05-02 | 1938-09-20 |
| KBTR 0030 | OOLTGENSPLAAT-MIDDELHARNIS (tram) | III | 1909-05-02 | 1917-07-24 |
| KBTR 0030 | OOLTGENSPLAAT-MIDDELHARNIS (tram) | IV | 1909-05-02 | 1914-09-13 |
| KBTR 0031 | OUDDORP-MIDDELHARNIS (tram) | I | 1909-05-02 | 1931-04-14 |
| KBTR 0031 | OUDDORP-MIDDELHARNIS (tram) | II | 1909-05-02 | 1937-07-21 |
| KBTR 0031 | OUDDORP-MIDDELHARNIS (tram) | III | 1909-05-02 | 1931-06-01 |
| KBTR 0031 | OUDDORP-MIDDELHARNIS (tram) | IV | 1909-05-02 | 1911-11-20 |
| KBTR 0031 | OUDDORP-MIDDELHARNIS (tram) | V | 1909-05-02 | 1919-11-03 |
| KBTR 0032 | QUEENBOROUGH-VLISSINGEN (boot) | I | 1909-02-27 | 1910-08-05 |
| KBTR 0032 | QUEENBOROUGH-VLISSINGEN (boot) | II | 1909-02-27 | 1911-04-21 |
| KBTR 0033 | RHEINE-AMSTERDAM | A | 1908-09-29 | 1911-07-26 |
| KBTR 0034 | ROODESCHOOL-GRONINGEN | I | 1908-07-15 | 1910-06-16 |
| KBTR 0034 | ROODESCHOOL-GRONINGEN | II | 1908-07-15 | 19?? |
| KBTR 0035 | ROTTERDAM-HELLEVOETSLUIS (tram) | A | 1909-12-04 | 19?? |
| KBTR 0035 | ROTTERDAM-HELLEVOETSLUIS (tram) | B | 1909-12-04 | 1916-02-16 |
| KBTR 0035 | ROTTERDAM-HELLEVOETSLUIS (tram) | D | 1909-12-04 | 1915-07-01 |
| KBTR 0036 | RUURLO-HENGEL | I | 1909-10-30 | 1917-05-04 |
| KBTR 0036 | RUURLO-HENGEL | III | 1909-10-30 | 1916-09-08 |
| KBTR 0036 | RUURLO-HENGEL | IV | 1909-10-30 | 1925-03-08 |
| KBTR 0037 | SNEEK-JOURE (tram) | - | 1910-01-06 | 19?? |
| KBTR 0038 | STIENS-HARLINGEN | I | 1909-10-09 | 1910-03-19 |
| KBTR 0038 | STIENS-HARLINGEN | II | 1909-10-09 | 1912-10-04 |
| KBTR 0039 | TERBORG-DIEREN (tram) | A | 1910-01-06 | 1931-11-21 |
| KBTR 0039 | TERBORG-DIEREN (tram) | B | 1910-01-06 | 1928-03-30 |
| KBTR 0039 | TERBORG-DIEREN (tram) | C | 1910-01-06 | 1917-07-26 |
| KBTR 0039 | TERBORG-DIEREN (tram) | D | 1910-01-06 | 1917-08-10 |
| KBTR 0040 | VLISSINGEN-BREDA | I | 1910-02-15 | 19?? |
| KBTR 0040 | VLISSINGEN-BREDA | II | 1910-02-15 | 1914-10-23 |
| KBTR 0040 | VLISSINGEN-BREDA | III | 1910-02-15 | 1914-02-02 |
| KBTR 0040 | VLISSINGEN-BREDA | IV | 1910-02-15 | 1916-07-13 |
| KBTR 0040 | VLISSINGEN-BREDA | V | 1910-02-15 | 1912-03-22 |
| KBTR 0040 | VLISSINGEN-BREDA | VI | 1910-02-15 | 1919-12-03 |
| KBTR 0040 | VLISSINGEN-BREDA | VIII | 1910-02-15 | 1917-07-03 |
| KBTR 0041 | VLISSINGEN-QUEENBOROUGH (boot) | A | 1909-02-27 | 1910-06-13 |
| KBTR 0041 | VLISSINGEN-QUEENBOROUGH (boot) | B | 1909-02-27 | 1910-04-20 |

Kortebalkstempels Spoorwegpostkantoren

| Nr: | Benaming: | VG: | LG: |
|------------|--|------------|------------|
| KBSP 0001 | SPOORWEGPOSTKANTOOR N ^o 2 ROTTERDAM | 1915-12-30 | 19?? |
| KBSP 0002 | SPOORWEGPOSTKANTOOR N ^o 4 ARNHEM | 1909-10-30 | 19?? |